

AIR BALANCE SUMMARY				
UNIT NO.	SUPPLY	RETURN	OUTSIDE AIR	EXHAUST AIR
RTU-1	1600	1000	600	-
RTU-2	1600	1000	600	-
RTU-3	1750	1100	650	-
RTU-4	1750	1100	650	-
EF-1	-	-	-	375
EF-2	-	-	-	150
KSF-1	-	-	4090	-
KEF-1	-	-	-	1800
KEF-2	-	-	-	2025
KEF-3	-	-	-	1400
TOTALS	6700	4200	6590	5750
PRESSURIZATION = 6590(OA) - 5750(EA) = 840 CFM POSITIVE				

KITCHEN HOOD EXHAUST AND MAKE UP AIR SYSTEMS:
 KITCHEN HOOD, EXHAUST FAN AND MAKE UP AIR FAN SHALL BE PROVIDED BY KITCHEN EQUIPMENT SUPPLIER AND INSTALLED BY THE MECHANICAL CONTRACTOR. MECHANICAL CONTRACTOR TO PROVIDE ALL REQUIRED DUCTWORK FOR THE SYSTEM. GREASE EXHAUST DUCT SHALL BE 16 GAUGE CARBON STEEL CONSTRUCTION.

NOTE:
 KITCHEN HOODS SHALL BE COMPLETE WITH FIRE SUPPRESSION SYSTEM PER NFPA-96. COMPLETE HOOD ASSEMBLY SHALL BE UL LABELED AND INSTALLED PER THE REQUIREMENTS OF THE STATE BUILDING CODE AND NFPA-96.

HVAC GENERAL NOTES

- THE CONTRACTOR SHALL FURNISH AND INSTALL ALL MATERIAL AND EQUIPMENT IN STRICT ACCORDANCE WITH APPLICABLE CODES AND STANDARDS, AND PER MANUFACTURER'S DIRECTIONS.
- THE CONTRACTOR SHALL SECURE AND PAY FOR ALL NECESSARY PERMITS, LICENSE, INSPECTIONS, APPROVALS, AND FEES.
- THE CONTRACTOR SHALL COORDINATE HIS WORK WITH ALL OTHER TRADES BEFORE INSTALLATION OF ANY MATERIALS OR EQUIPMENT.
- THESE DRAWINGS ARE DIAGRAMMATIC AND SHOW GENERAL LOCATION AND ARRANGEMENT OF ALL MATERIALS AND EQUIPMENT. THE DRAWINGS SHALL BE FOLLOWED AS CLOSELY AS BUILDING CONSTRUCTION AND ALL OTHER WORK WILL PERMIT.
- DO NOT SCALE DRAWINGS FOR MEASUREMENTS.
- ALL DUCT DIMENSIONS SHOWN ARE INTERIOR DUCT DIMENSIONS.
- ALL PENETRATIONS THROUGH EXTERIOR WALLS & ROOF SHALL BE FLASHED & COUNTERFLASHED IN A WATERPROOF MANNER. (COLOR TO MATCH EXTERIOR).
- SEAL ALL PENETRATIONS OF RATED WALLS WITH FIRE DAMPER, SEALANT MATERIAL APPROVED BY LOCAL CODE.
- ALL SUSPENDED MATERIALS AND EQUIPMENT SHALL BE INDIVIDUALLY SUPPORTED FROM THE BUILDING STRUCTURE. DO NOT SUSPEND ITEMS FROM THE CEILING OR ITS SUPPORT SYSTEM.
- INSTALL ALL CONTROL DEVICES, INCLUDING THERMOSTATS AND SWITCHES, 4'-0" ABOVE FINISHED FLOOR. PROVIDE THE REQUIRED DEVICE(S) FOR ALL SYSTEMS WHETHER LOCATED ON THE PLANS OR NOT.
- LOCATE CEILING DIFFUSERS IN ACCORDANCE WITH ARCHITECTURAL REFLECTED CEILING PLANS (IF PROVIDED).
- PROVIDE MANUFACTURER'S RECOMMENDED CLEARANCES AROUND MECHANICAL UNITS FOR MAINTENANCE AND FILTER REMOVAL.
- ALL PIPING AND DUCTWORK LOCATIONS SHALL BE COORDINATED W/ WORK UNDER OTHER DIVISIONS OF THE SPECIFICATIONS, TO AVOID INTERFERENCE.
- ALL SUPPLY AND RETURN DUCT SHALL BE INSULATED. CONCEALED SHEET METAL DUCT MAY BE EXTERNALLY INSULATED WITH MINERAL FIBER BOARD OR BLANKET OR MAY BE INTERNALLY INSULATED WITH DUCT LINER (R-VALUE + 5). THE FIRST 15' FROM THE AIR HANDLER SHALL BE INTERNALLY LINED. INTERNALLY LINED INSULATION SHALL MEET BACTERIOLOGICAL STANDARD ASTM C 665.
- CERTIFIED TEST AND BALANCE CONTRACTOR SHALL BALANCE SYSTEM TO AIR QUANTITIES INDICATED ON PLANS AND PROVIDE OWNER'S REPRESENTATIVE WITH COMPLETE BALANCE REPORT. IF BALANCING DAMPERS ARE NOT PROVIDED IN RETURN DUCTWORK, CONTRACTOR SHALL BALANCE SUPPLY SIDE TO AIR QUANTITIES INDICATED ON PLANS AND SHALL BALANCE OUTSIDE AIR AND RETURN AIR FLOWS AT THE AIR HANDLER TO AIR QUANTITIES INDICATED IN THE SCHEDULE. PROVIDE NEW AIR FILTERS FOR EACH UNIT.
- AS REQUIRED BY LOCAL CODES, MECHANICAL CONTRACTOR SHALL PROVIDE U.L. LISTED FIRE DAMPERS WHERE REQUIRED FOR FIRE PROTECTION REQUIREMENTS OF THE HVAC SYSTEM & THE UL ASSEMBLY.
- PROVIDE 1 YEAR WARRANTY ON ALL EQUIPMENT AND 5 YEAR WARRANTY ON ALL COMPRESSORS.
- ALL INTAKE OPENINGS SHALL BE LOCATED A MINIMUM OF 10'-0" FROM ALL EXHAUST LOCATIONS.
- CONDENSATE DRAIN PIPING SHALL BE SCHEDULE 40 PVC PIPE AND FITTINGS. DRAINS FROM AIR HANDLING UNITS SHALL BE TRAPPED AND EXTENDED TO NEAREST ROOF DRAIN.
- A COMPLETE SYSTEM OF SEISMIC RESTRAINTS SHALL BE DESIGNED BY MASON INDUSTRIES & SEALED BY THEIR REGISTERED ENGR & INSTALLED BY THIS CONTR. AS REQ'D BY APPLICABLE CODES FOR THE LOCALE OF THIS PROJECT.
- ALL MAIN DUCTWORK SHALL BE GALVANIZED SHEET METAL CONSTRUCTED IN ACCORDANCE WITH SMACNA STANDARDS. RUNOUTS FROM MAIN/BRANCH DUCTS MAY BE FLEXIBLE DUCT CONFORMING TO THE REQUIREMENTS OF UL 181 FOR CLASS 1 FLEXIBLE AIR DUCTS. MAX. LENGTH OF FLEX PER RUNOUT TO BE 7'-0".
- THE MECHANICAL CONTRACTOR SHALL PROVIDE LOW VOLTAGE CONTROL LINES TO THE ROOFTOP UNIT. COORDINATE ROUTING AND INSTALLATION WITH THE GENERAL CONTRACTOR.
- ELECTRICAL CONTRACTOR TO PROVIDE ALL HIGH VOLTAGE ELECTRICAL WIRING, CONDUIT, DISCONNECT SWITCHES, FUSES, ECT. TO ROOFTOP UNITS. ALL FINAL ELECTRICAL CONNECTIONS ARE BY ELECTRICAL CONTRACTOR.
- OUTSIDE AIR DUCTWORK SHALL BE WRAPPED WITH 1/2" FIBERGLASS DUCT WRAP WITH VAPOR BARRIER.
- MECHANICAL CONTRACTOR SHALL VERIFY LOCATION OF ALL PENETRATIONS FOR RELIEF HOODS, OUTSIDE AIR HOODS, LOUVERS, AND WALL CAPS WITH ARCHITECT & OWNER PRIOR TO INSTALLATION.
- MECHANICAL CONTRACTOR SHALL PAINT ALL RELIEF HOODS, INTAKE HOODS, LOUVERS, AND VENT CAPS. CONFIRM COLOR WITH ARCHITECT & OWNER PRIOR TO INSTALLATION.
- SEE PLUMBING SHEETS FOR ALL GAS PIPING INFORMATION AND DETAILS.
- PENETRATIONS OF RATED WALLS, PARTITIONS AND FLOORS OF NON-COMBUSTIBLE CONSTRUCTION SHALL BE FIRESTOPPED WITH NONCOMBUSTIBLE MATERIALS. PENETRATIONS OF NONRATED WALLS, PARTITIONS AND FLOOR OF COMBUSTIBLE CONSTRUCTION SHALL BE FIRESTOPPED WITH MATERIALS EQUIVALENT TO TWO INCHES OF WOOD. FIRESTOPPING SHALL COMPLY WITH ASTM E-814.
- KITCHEN HOOD EXHAUST DUCT SHALL BE 16 GAUGE CARBON STEEL. ALL JOINTS AND SEAMS SHALL BE CONSTRUCTED WITH A CONTINUOUS LIQUID-TIGHT EXTERNAL WELD. ALL DUCTWORK SHALL SLOPE A MINIMUM OF 1/8" INCH PER FOOT TOWARD HOOD. PROVIDE CLEANOUTS AT EVERY CHANGE OF DIRECTION IN THE EXHAUST DUCT.
- ALL CUTTING AND PATCHING OF WALLS AND FLOORS FOR MECHANICAL EQUIPMENT SHALL BE THE RESPONSIBILITY OF THE MECHANICAL CONTRACTOR.

THE ARCHITECT/ENGINEER DOES NOT DEFINE THE SCOPE OF INDIVIDUAL TRADES, SUBCONTRACTORS, MATERIAL SUPPLIERS, OR VENDORS. ANY SHEET NUMBERING SYSTEM USED WHICH IDENTIFIES DISCIPLINES IS SOLELY TO SEPARATE ARCHITECTS AND ENGINEER'S SCOPE. IT DOES NOT DEFINE A SUBCONTRACTOR'S SCOPE OF WORK. NO CONSIDERATION WILL BE GIVEN TO REQUESTS FOR CHANGE ORDERS FOR FAILURE TO OBTAIN AND REVIEW THE COMPLETE SET OF DRAWINGS AND SPECIFICATIONS.

ENERGY REQUIREMENTS: MECHANICAL SYSTEMS, SERVICE SYSTEMS AND EQUIPMENT

METHOD OF COMPLIANCE
 PRESCRIPTIVE PERFORMANCE ENERGY COST BUDGET

CLIMATE ZONE	3
THERMAL ZONE	
WINTER DRY BULB	23
SUMMER DRY BULB	91
INTERIOR DESIGN CONDITIONS	
WINTER DRY BULB	70
SUMMER DRY BULB	75
RELATIVE HUMIDITY	50

BUILDING HEATING LOAD (MBH)	372
BUILDING COOLING LOAD (MBH)	203

MECHANICAL SPACING CONDITIONING SYSTEM UNITARY	DESCRIPTION OF UNIT	SEE SCHEDULES
	HEATING EFFICIENCY	SEE SCHEDULES
	COOLING EFFICIENCY	SEE SCHEDULES
	HEAT OUTPUT OF UNIT	SEE SCHEDULES
	COOLING OUTPUT OF UNIT	SEE SCHEDULES

BOILER	TOTAL BOILER OUTPUT. IF OVERSIZED, STATE REASON. NA	
CHILLER	TOTAL CHILLER OUTPUT. IF OVERSIZED, STATE REASON. NA	

LIST EQUIPMENT EFFICIENCIES	SEE SCHEDULES
EQUIPMENT SCHEDULES WITH MOTORS (MECHANICAL SYSTEMS)	
MOTOR HORSEPOWER	SEE SCHEDULES
NUMBER OF PHASES	SEE SCHEDULES
MINIMUM EFFICIENCY	SEE SCHEDULES
MOTOR TYPE	SEE SCHEDULES
NUMBER OF POLES	SEE SCHEDULES

DESIGNER'S STATEMENT:
 TO THE BEST OF MY KNOWLEDGE AND BELIEF, THE DESIGN OF THIS BUILDING COMPLIES WITH THE MECHANICAL SYSTEMS, SERVICE SYSTEMS AND EQUIPMENT REQUIREMENTS OF THE N.C.S. ENERGY CODE.

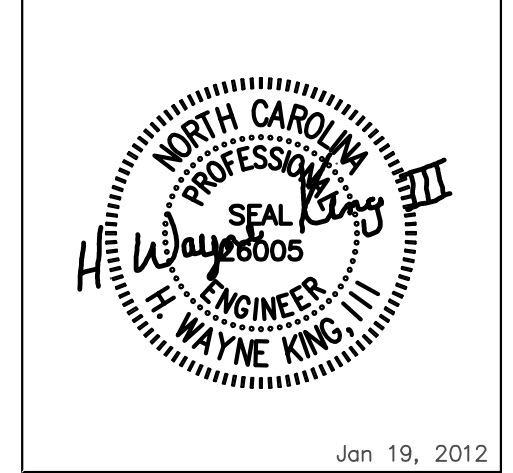
SIGNED: _____

NAME: H. WAYNE KING III, P.E.

TITLE: MECHANICAL ENGINEER



2923 South Tryon Street Suite 280
 Charlotte, North Carolina 28203
 tel 704.373.0068 fax 704.373.0260
 MECHANICAL ELECTRICAL PLUMBING



architecture • interior design
 1300 South Mint Street, Suite 300, Charlotte, NC 28203
 Email: esd@esdarch.com • Fax: 704-373-0902 • Phone: 704-373-1900



BOJANGLES' 8.0 RESTAURANT
 4131 STATESVILLE AVE.
 CHARLOTTE, NORTH CAROLINA

MECHANICAL LEGEND

- RECTANGULAR DUCT
- ROUND METAL DUCT
- FLEX/RIGID ROUND DUCT
- ELBOW WITH TURNING VANES
- VOLUME DAMPER
- SUPPLY TAP WITH VOLUME DAMPER
- SUPPLY TAP
- SUPPLY DIFFUSER/GRILLE
- RETURN REGISTER/GRILLE
- EXHAUST REGISTER/GRILLE
- SIDEWALL DIFFUSER/GRILLE
- CEILING EXHAUST FAN
- CONNECT TO EXISTING
- T-STAT
- REMOTE SENSOR
- DUCT SMOKE DETECTOR
- LOUVERED DOOR (SEE ARCHITECTURAL DRAWINGS)
- 3/4" DOOR UNDER CUT
- U.L. FIRE DAMPER W/ ACCESS DOOR
- REMOTE PULL STATION

DIFFUSER SCHEDULE

SYMBOL	CFM	NECK SIZE	MODULE SIZE	FRAME TYPE	PATTERN	DAMPER	MATERIAL	SERVICE	FINISH	MANUFACTURER & MODEL NO.	NOTES
A	AS NOTED	AS NOTED	24x24	LAY-IN	4-WAY	YES	STEEL	SUPPLY	NOTE 2	TITUS TDC	1-4
B	AS NOTED	AS NOTED	12x12	SURFACE	4-WAY	YES	STEEL	SUPPLY	NOTE 2	TITUS TDC	1-4
C	AS NOTED	AS NOTED	24x24	LAY-IN	-	NO	STEEL	RETURN	NOTE 2	TITUS PAR	1-4
D	AS NOTED	AS NOTED	12x12	SURFACE	-	NO	STEEL	EXHAUST	NOTE 2	TITUS PAR	1-4

NOTES:

- DIFFUSER DESIGNATIONS ON PLANS AS FOLLOWS:
- FINISH TO MATCH / BE ABLE MATCH CEILING OR WALL OR DOOR
- VERIFY CEILING COLOR. COORD AND VERIFY WITH OWNER/ARCH.
- INSULATE BACK SIDE OF DIFFUSERS AND GRILLES.

VENTILATION CALCULATIONS

CALCULATIONS BASED ON THE 2009 IMC/NCIC TALBE 403.3

RTU-1, 2, 3, 4 (DINING, KITCHEN)
 DINING
 = (1463 SQFT) X (70 PEOPLE/1000 SQFT) X (20 CFM/PERSON)
 = 2048 CFM
 KITCHEN
 = (1445 SQFT) X (20 PEOPLE/1000 SQFT) X (15 CFM/PERSON)
 = 433 CFM
 = 2048 CFM + 433 CFM
 = 2481 CFM
 RTU-1, 2, 3, 4 PROVIDE 2500 CFM

PACKAGED DX COOLING / GAS HEATING ROOF TOP UNIT SCHEDULE

UNIT NO.	AREA SERVED	SUPPLY - FAN DATA				HEATING CAPACITY		COOLING CAPACITY		ELECTRICAL DATA			MANUFACTURER & MODEL	UNIT TONNAGE	UNIT WEIGHT(LBS)	NOTES	
		TOTAL CFM	O/A CFM	MIN. EX. S.P. (IN.WG)	FAN RPM	MOTOR H.P.	INPUT M.B.H.	OUTPUT M.B.H.	TOTAL M.B.H.	SENSIBLE M.B.H.	VOLT/PH	MAX FUSE					MCA
RTU-1	DINING	1600	600	0.75"	825	1/4	105	84	50.1	49.0	208/3Ø	40	30	LENNOX LGH048H4B	4	599	1 2 3 4 5 6 7 8
RTU-2	DINING	1600	600	0.75"	825	1/4	105	84	50.1	49.0	208/3Ø	40	30	LENNOX LGH048H4B	4	599	1 2 3 4 5 6 7 8
RTU-3	KITCHEN	1750	650	1.0"	1075	1/3	150	120	61.6	60.0	208/3Ø	50	36	LENNOX LGH060H4B	5	913	1 2 3 4 5 6 7 8
RTU-4	KITCHEN	1750	650	1.0"	1075	1/3	150	120	61.6	60.0	208/3Ø	50	36	LENNOX LGH060H4B	5	913	1 2 3 4 5 6 7 8

NOTES:

- COOLING CAPACITIES ARE RATED IN ACCORDANCE WITH ARI STANDARD 210/290 AT 95°F AMBIENT OUTDOOR AIR TEMP., 80°F DRY BULB, 67° WET BULB ENTRANCE AIR TEMP., AND NOMINAL AIR QUANTITY LISTED. EFFICIENCIES ARE RATED AT ARI CONDITIONS IN ACCORDANCE WITH ARI 360-86.
- PROVIDE MANUFACTURER'S 7-DAY PROGRAMMABLE AUTOMATIC CHANGEOVER HEAT/COOL THERMOSTAT SIMILAR TO HONEYWELL MODEL T-7300 WITH MATCHING SUBBASE FOR EACH UNIT, AND HONEYWELL MODEL T6501A THERMOSTAT GUARD FOR EACH UNIT. ALL GUARDS SHALL BE KEYPAD ALIKE. PROGRAM FAN SETTING TO BE IN "ON" POSITION DURING PERIODS OF OCCUPATION.
- PROVIDE FACTORY ROOF CURB WITH THRU THE BASE GAS/ELECTRICAL SERVICE AND AIR SIDE ECONOMIZER SECTION WITH BAROMETRIC RELIEF FOR EACH UNIT.
- PROVIDE NEW FILTERS (30% EFFICIENT) FOR EACH UNIT AT TURNOVER TO OWNER.
- DUCT SMOKE DETECTOR TO BE FURNISHED BY EC AND INSTALLED BY M.C.
- FOR ORDERING INFORMATION, CONTACT LENNOX NATIONAL ACCOUNTS - 800-367-6285.
- COORDINATE RTU FRAME OPENINGS WITH ROOF TRUSS FABRICATOR AND RTU LOCATIONS WITH SPRINKLER LAYOUT VIA GC.
- UNITS WITH HEATING CAPACITY OVER 115 MBH SHALL BE TWO STAGE MODULATING. UNITS 7.5 TONS AND LARGER SHALL HAVE DUAL COMPRESSORS.

FAN SCHEDULE

UNIT NO.	SERVICE	AREA SERVED	CFM	S.P.	RPM	TYPE & ARRANGEMENT	MIN. MOTOR HP & VOLTAGE	MANUFACTURER & MODEL NO.	DRIVE	CONTROL SCHEME	REMARKS
EF-1	EXHAUST	TOILETS	375 MIN	0.25"	1050	ROOF	1/4 HP 120/1Ø	GREENHECK GB-080-4	BELT	D	1 2 4 5 7
EF-2	EXHAUST	MOP SINK	150	0.25"	1400	CEILING	113 WATTS/1.3A 120/1Ø	GREENHECK SP-A190	DIRECT	B	3 4
KSF-1	MAKE UP AIR	KITCHEN MUA	1485							C	6
KEF-1	EXHAUST	HOOD-1 EXHAUST	1800							C	6
KEF-2	EXHAUST	HOOD-2 EXHAUST	2025							C	6
KEF-3	EXHAUST	HOOD-3 EXHAUST	1400							C	6

NOTES:

- SCREEN
- BACKDRAFT DAMPER
- COLOR BY ARCHITECT
- INTEGRAL DISCONNECT SWITCH
- PROVIDE WITH ROOF CURB
- HOOD/FAN PACKAGE FURNISHED BY OTHERS. INFORMATION SHOWN FOR REFERENCE ONLY.
- U.L. LISTED

CONTROL OPTIONS:

- CONTROL W/ ROOM LIGHTS
- CONTROL W/ SWITCH
- CONTROL W/ HOOD MOUNTED SWITCH
- INTERLOCK WITH RTU T-STAT OCCUPIED/OCCUPIED MODE

RECEIVED 1/23/12
 BY PRIMAX CONSTRUCTION, INC.

ISSUE DATE: 01-16-12

REVISION 1: --

REVISION 2: --

REVISION 3: --

REVISION 4: --

PROJECT #: 11-186-000

CONTENT: MECHANICAL SCHEDULES AND NOTES

PROJECT ENGINEER: SABER

DRAWN BY: MAJ

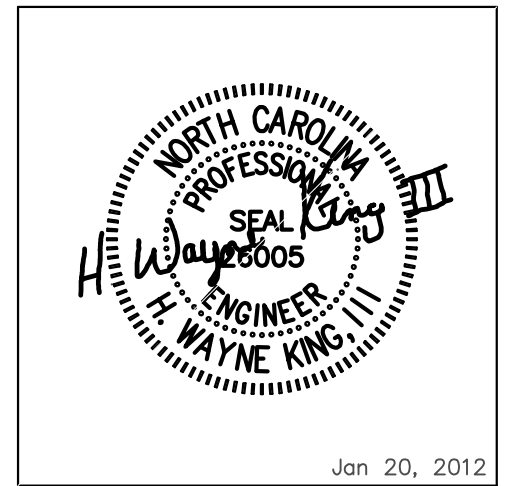
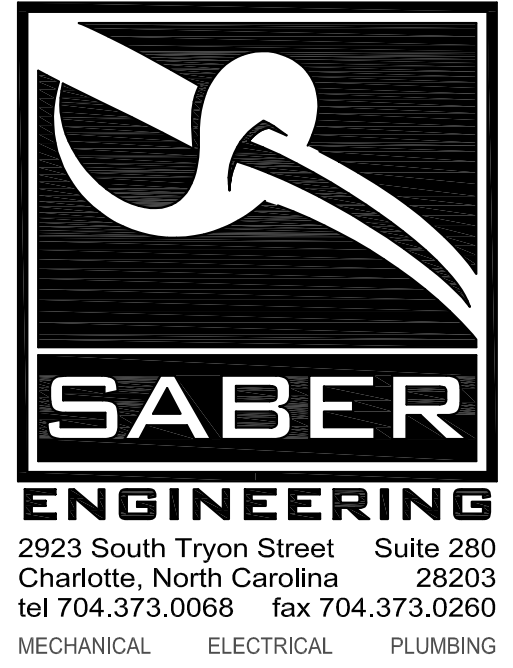
CADD FILE NAME: ESD-1201-MO1

THIS DRAWING AND THE DESIGN SHOWN ARE THE PROPERTY OF ESD. THE REPRODUCTION, OR USE OF THIS DRAWING WITHOUT THEIR WRITTEN CONSENT IS PROHIBITED. ANY INFRINGEMENT IS SUBJECT TO LEGAL ACTION.

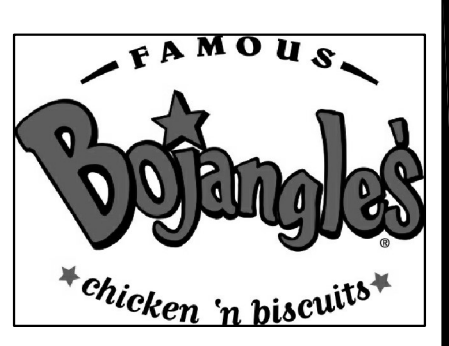
Sheet

M-1

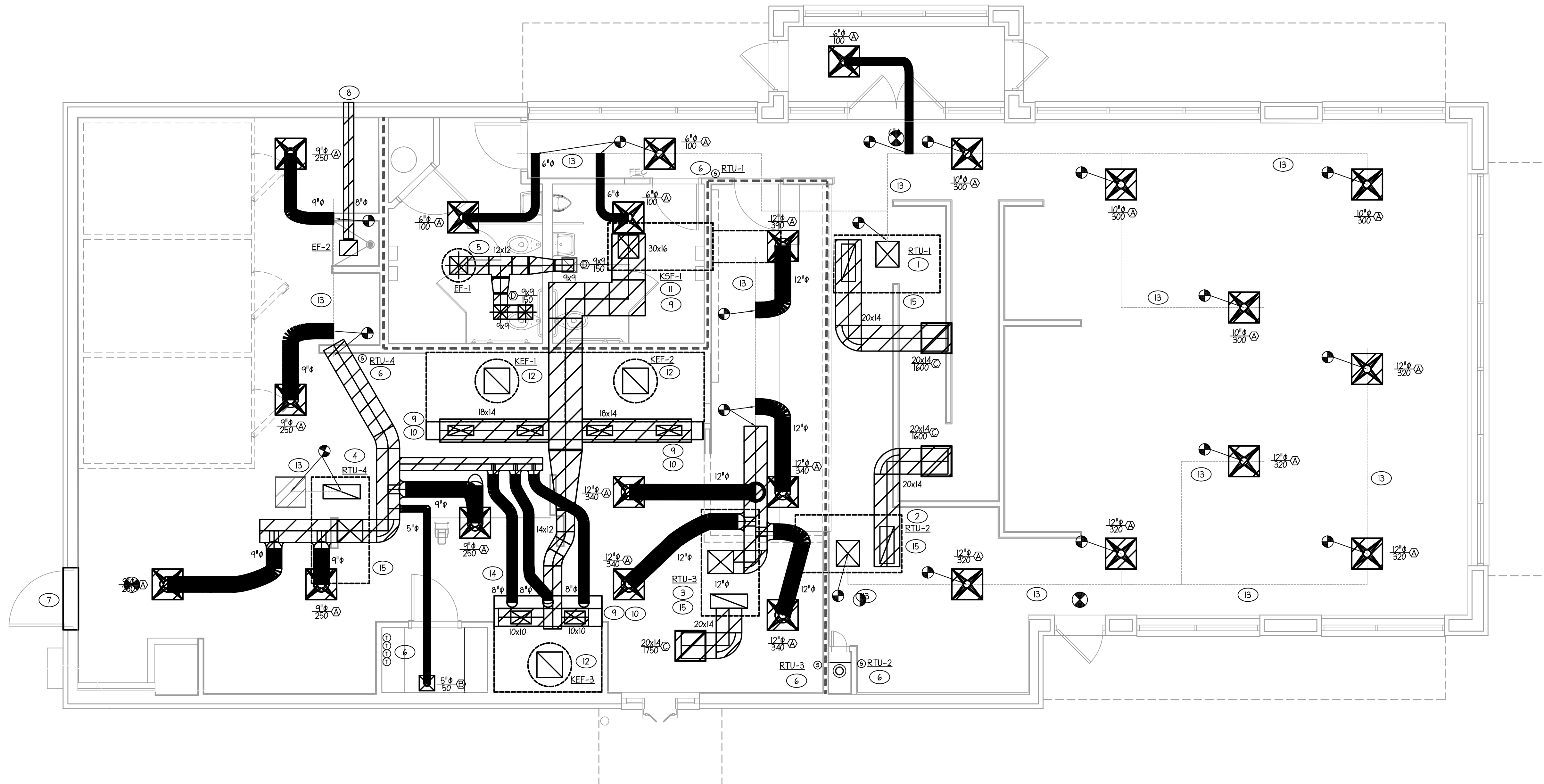
THE ARCHITECT/ENGINEER DOES NOT DEFINE THE SCOPE OF INDIVIDUAL TRADES, SUBCONTRACTORS, MATERIAL SUPPLIERS, OR VENDORS. ANY SHEET NUMBERING SYSTEM USED WHICH IDENTIFIES DISCIPLINES IS SOLELY TO SEPARATE ARCHITECT'S AND ENGINEER'S SCOPE; IT DOES NOT DEFINE A SUBCONTRACTOR'S SCOPE OF WORK. NO CONSIDERATION WILL BE GIVEN TO REQUESTS FOR CHANGE ORDERS FOR FAILURE TO OBTAIN AND REVIEW THE COMPLETE SET OF DRAWINGS AND SPECIFICATIONS.



architecture • interior design
 1300 South Mint Street, Suite 300, Charlotte, NC 28203
 Email: esd@esdarch.com • Fax: 704-373-0902 • Phone: 704-373-1900



BOJANGLES' 8.0 RESTAURANT
 4131 STATESVILLE AVE.
 CHARLOTTE, NORTH CAROLINA



1 MECHANICAL FLOOR PLAN
 1/4" = 1'-0"

TAGGED NOTES - THIS SHEET	
1	18x14 SUPPLY AND 20x14 RETURN DUCTWORK UP TO RTU-1. MOUNT SMOKE DETECTOR IN RETURN DUCT NEAR UNIT. COORDINATE EXACT LOCATION WITH EXISTING CONDITIONS AND WORK BY OTHERS.
2	18x14 SUPPLY AND 20x14 RETURN DUCTWORK UP TO RTU-2. MOUNT SMOKE DETECTOR IN RETURN DUCT NEAR UNIT. COORDINATE EXACT LOCATION WITH EXISTING CONDITIONS AND WORK BY OTHERS.
3	18x14 SUPPLY AND 20x14 RETURN DUCTWORK UP TO RTU-3. MOUNT SMOKE DETECTOR IN RETURN DUCT NEAR UNIT. COORDINATE EXACT LOCATION WITH EXISTING CONDITIONS AND WORK BY OTHERS.
4	18x14 SUPPLY AND 20x14 RETURN DUCTWORK UP TO RTU-4. MOUNT SMOKE DETECTOR IN RETURN DUCT NEAR UNIT. COORDINATE EXACT LOCATION WITH EXISTING CONDITIONS AND WORK BY OTHERS.
5	12x12 EXHAUST DUCT UP TO EF-1 ON ROOF. COORDINATE EXACT LOCATION WITH WORK BY OTHERS.
6	PROVIDE T-STATS FOR EACH UNIT. MOUNT T-STATS IN OFFICE. REMOTE SENSORS FOR EACH UNIT IN COORDINATING SPACE. COORDINATE WITH ELECTRICAL. LABEL ALL DEVICES FOR UNIT SERVED.
7	SERVICE ENTRANCE AIR CURTAIN EQUAL TO MARS MODEL 48C, 3040 CFM, 0.50 HP, 120V/1Ø, 5.2A, FURNISHED BY KITCHEN EQUIPMENT SUPPLIER, INSTALLED BY MC.
8	EXHAUST DUCT TO 12x12 RUSKIN ELF 6375 LOUVER OR EQUAL WITH A MINIMUM OF 50% FREE AREA. MATCH SIZE WITH EXISTING OPENING, FIELD VERIFY. PROVIDE WITH INSECT SCREEN. COORDINATE COLOR WITH ARCHITECT. MAINTAIN 10'-0" FROM ANY SOURCES OF FRESH AIR INTAKE.
9	REMOVE EXISTING MAKE-UP AIR DUCTWORK AND FAN. CAP EXISTING MAKE-UP AIR CONNECTIONS ON HOOD. COORDINATE HOOD WORK WITH KITCHEN EQUIPMENT CONTRACTOR.
10	PLENUM SUPPLY HOOD TO BE MOUNTED ON FRONT OF EXISTING KITCHEN HOOD. COORDINATE HOOD OPENING SIZES WITH HOOD DETAILS ON KITCHEN EQUIPMENT PLANS AND MAKE FINAL CONNECTION.
11	30x16 MAKE-UP AIR DUCT UP TO KSF-1 ON ROOF. REUSE EXISTING ROOF OPENING. FIELD VERIFY EXACT SIZE AND LOCATION OF ROOF OPENING.
12	EXISTING EXHAUST DUCT FOR KITCHEN HOODS TO REMAIN. KITCHEN EXHAUST FANS TO BE REPLACED. COORDINATE EXACT LOCATION, SIZE, ETC. WITH KITCHEN EQUIPMENT CONTRACTOR.
13	EXISTING DUCTWORK TO REMAIN.
14	8"Ø FLEX DUCT TO PROVIDE 150 CFM MAKE-UP AIR FROM RTU-4. (TYPICAL 3 CONNECTIONS) SEE KITCHEN EQUIPMENT PLANS FOR DETAILS AND FINAL CONNECTIONS.
15	MOUNT ROOFTOP UNIT ON EXISTING ROOF CURB. PROVIDE CURB ADAPTER AS NECESSARY. REUSE EXISTING ROOF OPENINGS.

RECEIVED 1/23/12
 BY PRIMAX CONSTRUCTION, INC.

ISSUE DATE: 01-16-12
 REVISION 1: --
 REVISION 2: --
 REVISION 3: --
 REVISION 4: --

PROJECT #: 11-186-000
 CONTENT: MECHANICAL FLOOR PLAN

PROJECT ENGINEER: SABER
 DRAWN BY: MAJ

CADD FILE NAME: ESD-1201-M02

THIS DRAWING AND THE DESIGN SHOWN ARE THE PROPERTY OF ESD. THE REPRODUCTION OR USE OF THIS DRAWING WITHOUT THE WRITTEN CONSENT IS PROHIBITED. ANY INFRINGEMENT IS SUBJECT TO LEGAL ACTION.

Sheet
M-2

THE ARCHITECT/ENGINEER DOES NOT DEFINE THE SCOPE OF INDIVIDUAL TRADES, SUBCONTRACTORS, MATERIAL SUPPLIERS, OR VENDORS. ANY SHEET NUMBERING SYSTEM USED WHICH IDENTIFIES DISCIPLINES IS SOLELY TO SEPARATE ARCHITECT'S AND ENGINEER'S SCOPE; IT DOES NOT DEFINE A SUBCONTRACTOR'S SCOPE OF WORK. NO CONSIDERATION WILL BE GIVEN TO REQUESTS FOR CHANGE ORDERS FOR FAILURE TO OBTAIN AND REVIEW THE COMPLETE SET OF DRAWINGS AND SPECIFICATIONS.



SABER ENGINEERING
 2923 South Tryon Street Suite 280
 Charlotte, North Carolina 28203
 tel 704.373.0068 fax 704.373.0260
 MECHANICAL ELECTRICAL PLUMBING

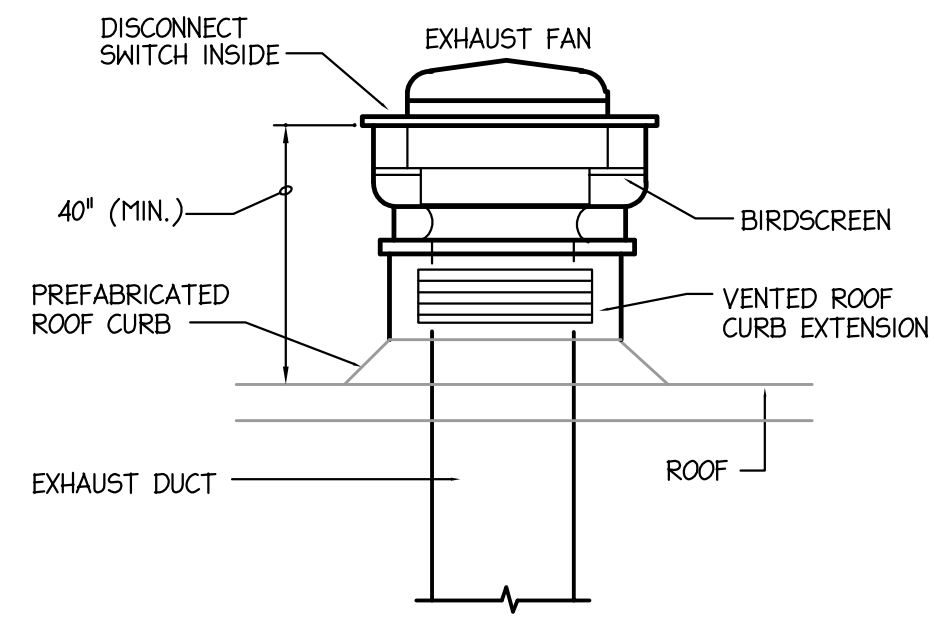


Jan 20, 2012

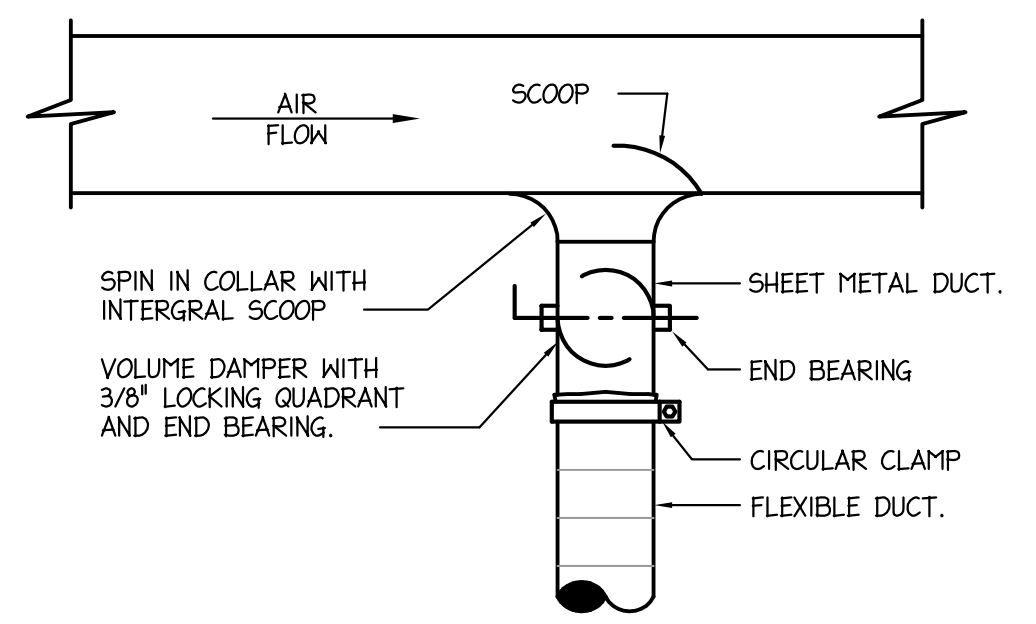
architecture • interior design

1300 South Mint Street, Suite 300, Charlotte, NC 28203
 Email: esd@esdarch.com • Fax: 704-373-0902 • Phone: 704-373-1900

NOTE:
 KITCHEN HOOD MAKE-UP AIR FAN INTAKE SHALL BE A MINIMUM OF 10'-0" AWAY FROM KITCHEN HOOD EXHAUST FAN.

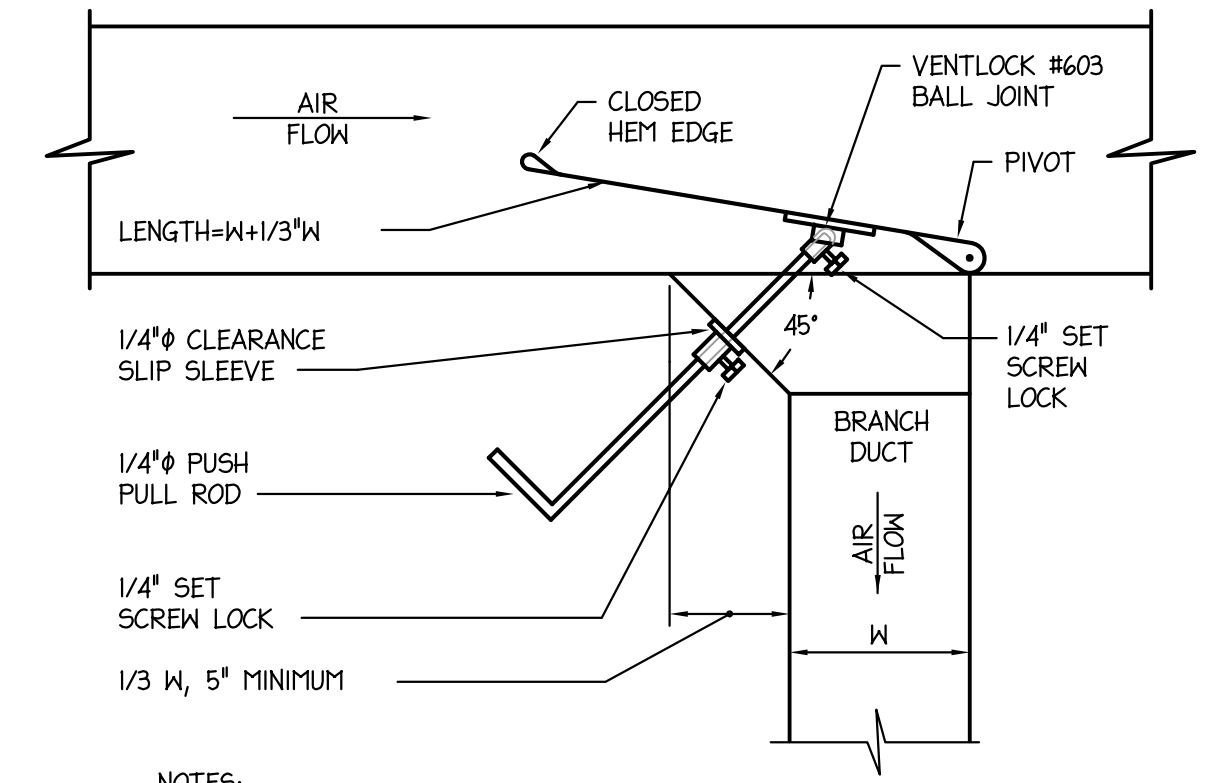


1 KITCHEN HOOD EXHAUST FAN DETAIL
 NO SCALE



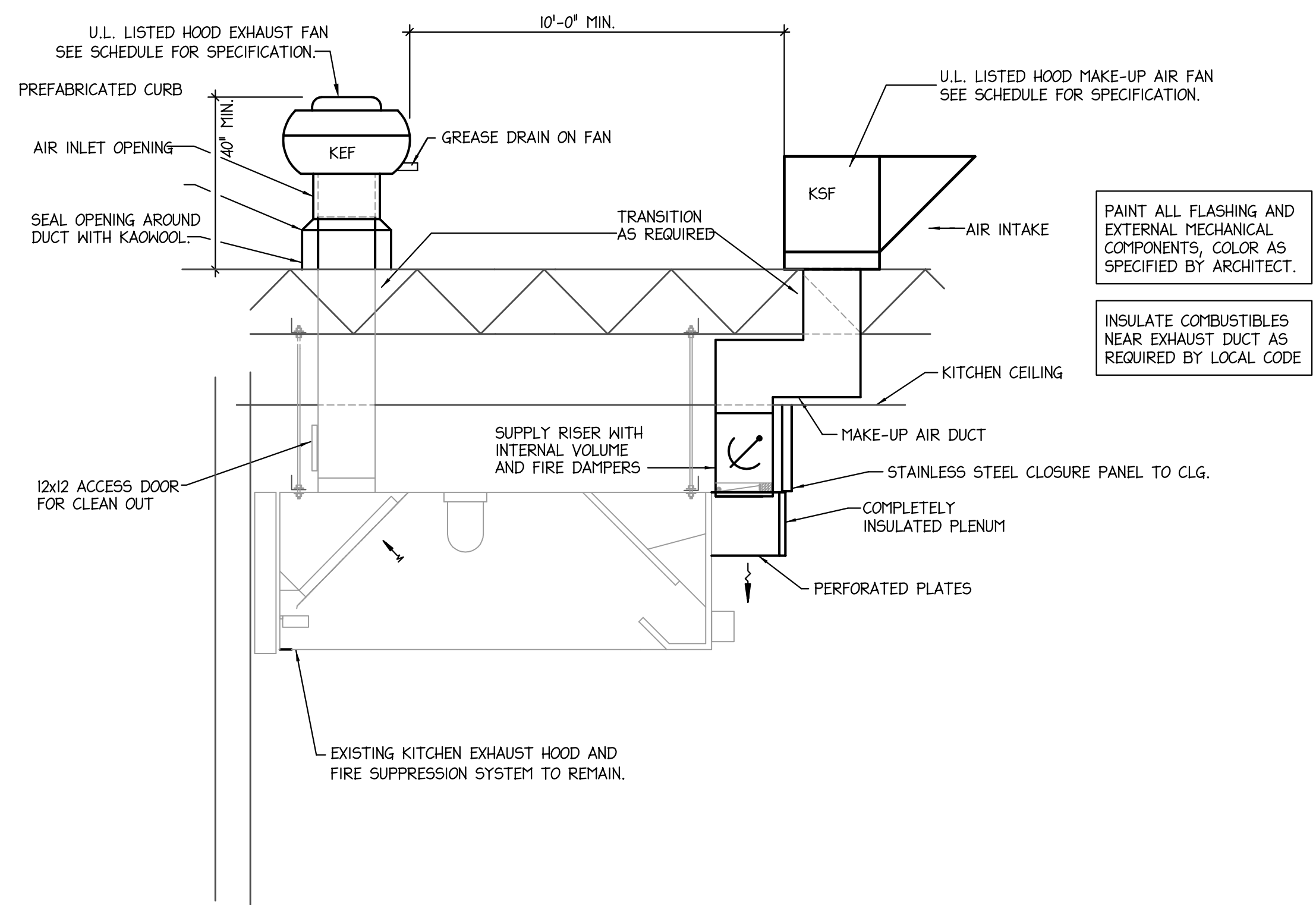
NOTES:
 1. SEE FLOOR PLANS AND SPECIFICATIONS FOR DUCT INSULATION REQUIREMENTS.
 2. TAP OFF TOP/SIDE/BOTTOM OF DUCT AS REQUIRED

2 BRANCH TAKEOFF TO SINGLE OUTLET
 NO SCALE



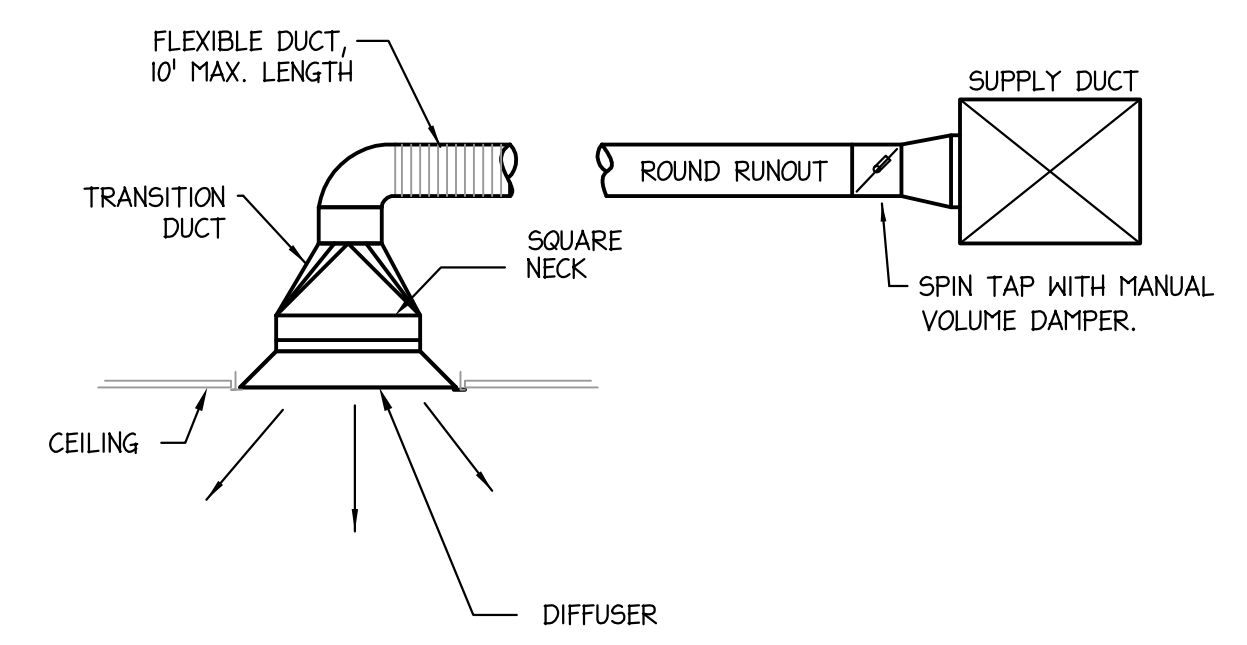
NOTES:
 1. SEE FLOOR PLANS AND SPECIFICATIONS FOR DUCT INSULATION REQUIREMENTS.
 2. TAP OFF TOP/SIDE/BOTTOM OF DUCT AS REQUIRED

3 BRANCH TAKEOFF TO MULTIPLE OUTLETS
 NO SCALE

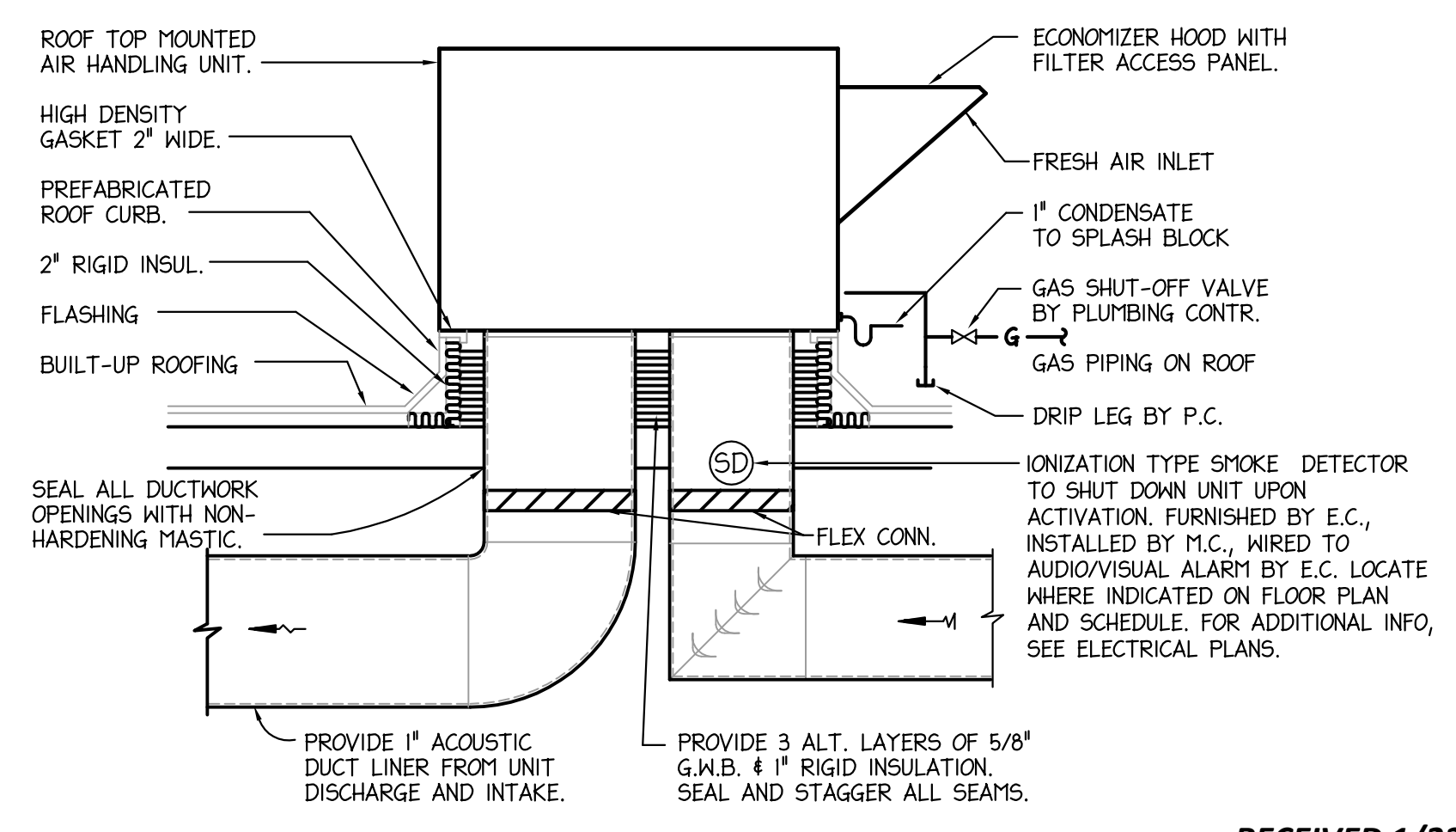


PAINT ALL FLASHING AND EXTERNAL MECHANICAL COMPONENTS, COLOR AS SPECIFIED BY ARCHITECT.
 INSULATE COMBUSTIBLES NEAR EXHAUST DUCT AS REQUIRED BY LOCAL CODE

5 KITCHEN HOOD SCHEMATIC
 NO SCALE



4 SUPPLY GRILLE DETAIL
 NO SCALE



6 GAS ROOFTOP UNIT
 NO SCALE

RECEIVED 1/23/12
 BY PRIMAX CONSTRUCTION, INC.

BOJANGLES' 8.0 RESTAURANT
 4131 STATESVILLE AVE.
 CHARLOTTE, NORTH CAROLINA

ISSUE DATE: 01-16-12
 REVISION 1: --
 REVISION 2: --
 REVISION 3: --
 REVISION 4: --

PROJECT #: 11-186-000
 CONTENT: MECHANICAL DETAILS

PROJECT ENGINEER: SABER
 DRAWN BY: MAJ

CADD FILE NAME: ESD-1201-M03

THIS DRAWING AND THE DESIGN SHOWN ARE THE PROPERTY OF ESD. THE REPRODUCTION, OR USE OF THIS DRAWING WITHOUT THEIR WRITTEN CONSENT IS PROHIBITED. ANY INFRINGEMENT IS SUBJECT TO LEGAL ACTION.

Sheet
M-3