

C.L. Helt, Architect Inc.

1136 Greenwood Cliff  
Charlotte, NC 28204

Ph. 704-342-1686  
Fx. 704-343-0054  
E-MAIL CHETHELT ? CLHELT.COM

ARCHITECT'S PROJECT # 11235

Project :  
**DOLLAR GENERAL**  
FOR  
PRIMAX PROPERTIES  
YORK HIGHWAY (NC HIGHWAY 321)  
GASTONIA, NC  
BASED ON DOLLAR GENERAL  
2010 PROTOTYPE CRITERIA SET PLAN 'C'

Sheet Description :  
**PLUMBING PLANS  
& SCHEDULES**

THIS DRAWING AND ITS COPIES ARE THE COPYRIGHT OF THE ARCHITECT. THEY MAY NOT BE USED FOR PROJECTS OTHER THAN THE DESIGNATED PROJECT WITHOUT THE SPECIFIC WRITTEN APPROVAL OF C. L. HELT ARCHITECT INC., AND OR CHESTER LEROY HELT, ARCHITECT

Drawn By :  
**C. THOMASON**

Checked By :  
**C. THOMASON**

Revisions :

- 1
- 2
- 3
- 4

Seal

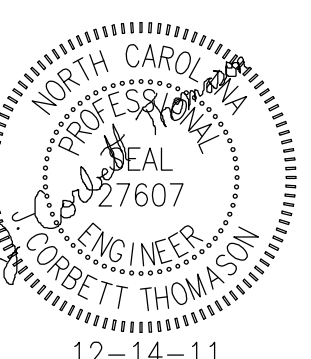
Date :

12/8/11

Sheet No.

**P1**

of :



12-14-11

RECEIVED 12/14/11  
BY PRIMAX CONSTRUCTION, INC.

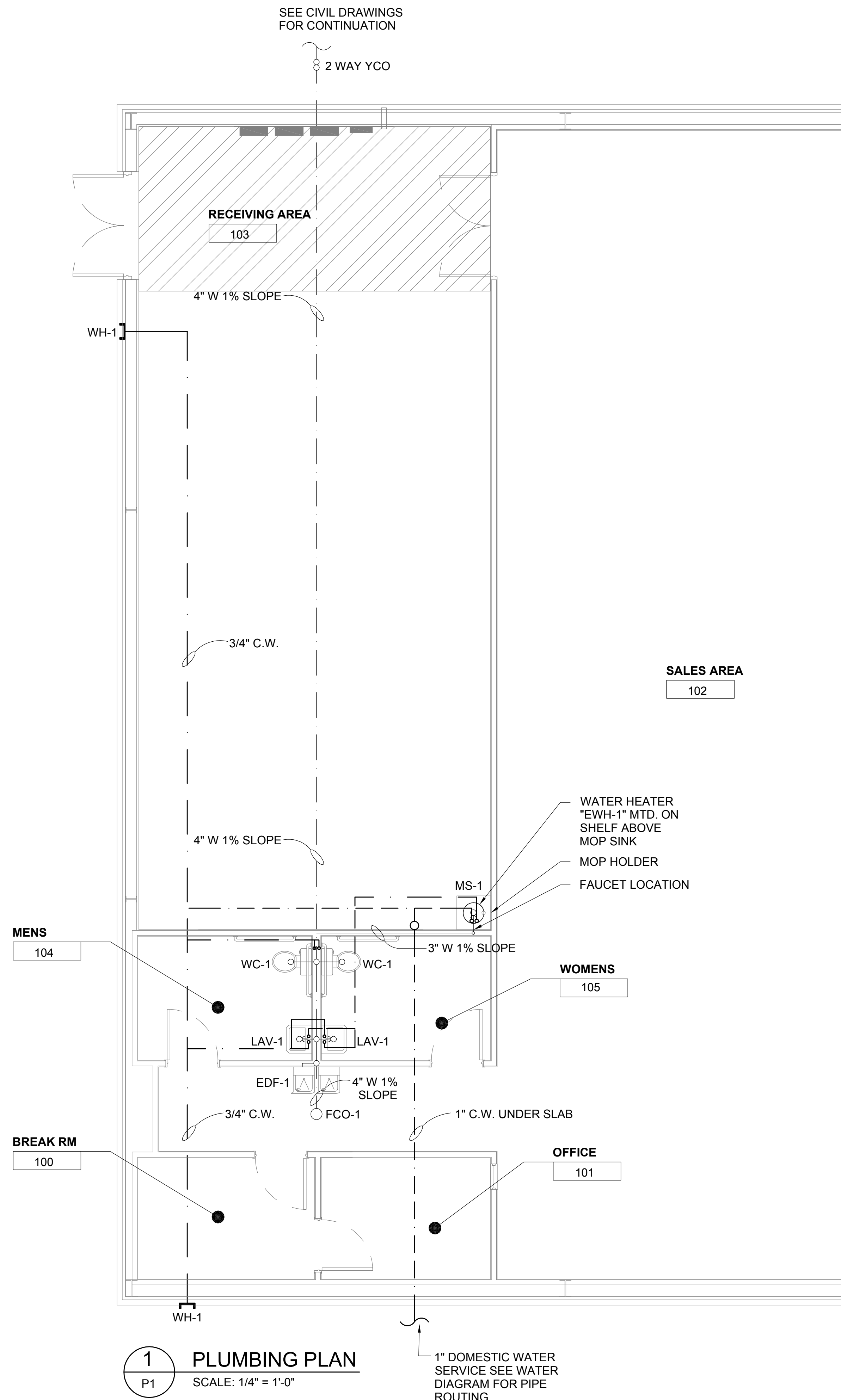
J. CORBETT THOMASON  
2120 DILWORTH RD. EAST  
CHARLOTTE, NC 28203  
PH. 704-333-1020  
FAX 704-333-1008

## PLUMBING FIXTURE SCHEDULE

| MARK  | DESCRIPTION   |
|-------|---|
| WC-1  | FLOOR MOUNTED ADA VITREOUS CHINA ELONGATED 1.6 FLUSH GALLON CLOSE COUPLED TWO PIECE SIPHON JET WATER CLOSET, FLUSH TANK WITH 12" ROUGH-IN. AMERICAN STANDARD CHAMPION 4 RIGHT HEIGHT #2002.014 OR EQUAL. PROVIDE SUPPLY & STOP. PROVIDE OPEN FRONT SEAT. AMERICAN STANDARD #5901.100 OR EQUAL (NOTE: TRIP SHALL BE ON WIDE SIDE OF WATER CLOSET).   |
| LAV-1 | 20"X18" WALL HUNG ADA LAVATORY W/ FRONT OVERFLOW, CONCEALED HANGERS & 4" CENTERS. AMERICAN STANDARD LUCERNE #0355.012 OR EQUAL. FAUCET SHALL BE POLISHED CHROME-PLATED CAST BRASS BODY WITH 4" SPOUT, 4" BRASS WRIST BLADE, 0.5 GPM SPRAY AND POP-UP DRAIN. AMERICAN STANDARD MONTERREY #5501.170 WITH #V05 AERATOR OR EQUAL. INSULATE EXPOSED DRAIN & WATER PIPES WITH TRUEBRO LAV GUARD KIT #102 E-Z. |
| MS-1  | 24" X 24" MOLDED STONE MOP SERVICE BASIN, WITH 3" DRAIN. FIAT #MSB-2424 OR EQUAL. PROVIDE SERVICE FAUCET WITH PAIL HOOK & INTEGRAL VACUUM BREAKER, MOP BRACKET, FLAT STAINLESS STEEL STRAINER AND HOSE & BRACKET. FIAT #830 AA, 889 CC, 1453 BB & 832 AA OR EQUAL.  |
| EWH-1 | 10 GALLON ELECTRIC WATER HEATER. 1.65KW @ 120V. A.O. SMITH #EJC-10 OR EQUAL. PROVIDE DRAIN PAN UNDER SHELF-MOUNTED WATER HEATER TERMINATE DRAIN LINE IN MOP SINK. PROVIDE FULL SIZE T&P RELIEF LINE, TERMINATE 2" ABOVE RIM LEVEL OF MOP SINK. INSTALL PER MANUFACTURER'S INSTRUCTIONS.   |
| EDF-1 | TWO-STATION, WALL MOUNTED, ELECTRIC DRINKING FOUNTAIN. BARRIER-FREE ACCESS (ADA), FRONT ONLY EASY TOUCH CONTROL, HIGH UNIT ON RIGHT. ELKAY #EZSTLR8LC OR EQUAL. PROVIDE SUPPLY, STOP VALVE & TRAP. PROVIDE CANE APRON AS REQUIRED.  |
| WH-1  | FREEZE-PROOF WALL HYDRANT WITH BRONZE BODY & ANTI-SIPHON VACUUM BREAKER, BOX AND LOCKING COVER. PROVIDE WITH HOSE CONNECTION AND MOUNT AT 24" ABOVE GRADE. FLUSH MOUNTED TAMPER RESISTANT.  |
| WCO-1 | SIZE & INSTALL AS SHOWN ON PLANS. JOSAM, ZURN OR EQUAL.   |
| FCO-1 | SIZE & INSTALL AS SHOWN ON PLANS. JOSAM, ZURN OR EQUAL.   |
| ECO-1 | 2-WAY EXTERIOR CLEAN-OUT. TYLER PIPE #003519 OR EQUAL. TRAFFIC RATED.   |

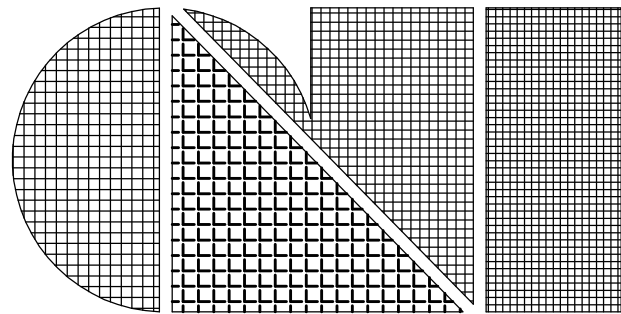
### NOTES:

- SEPTIC SYSTEM NOT ALLOWED UNLESS WRITTEN APPROVAL BY DOLLAR GENERAL STORE DESIGN.
- HOLDING TANK SYSTEMS NOT ALLOWED.
- LIFT STATIONS ARE NOT ALLOWED WITHOUT DOLLAR GENERAL APPROVAL
- CONTRACTOR RESPONSIBLE FOR ALL PUBLIC UTILITY CONNECTIONS (GAS, WATER, ELECTRIC, SEPTIC) AS WELL AS INFRASTRUCTURE REQUIRED BY UTILITY COMPANY.
- BACKFLOW PREVENTER TO BE LOCATED OUTSIDE. SEE CIVIL DRAWINGS.



1 PLUMBING PLAN  
P1 SCALE: 1/4" = 1'-0"

1" DOMESTIC WATER SERVICE SEE WATER DIAGRAM FOR PIPE ROUTING



C.L. Helt, Architect Inc.

1136 Greenwood Cliff  
Charlotte, NC 28204

Ph. 704-342-1686  
Fx. 704-343-0054  
E-MAIL CHELHELT ? CLHELT.COM

ARCHITECT'S PROJECT # 11235

Project :  
**DOLLAR GENERAL**  
FOR  
PRIMAX PROPERTIES  
YORK HIGHWAY (NC HIGHWAY 321)  
GASTONIA, NC  
BASED ON DOLLAR GENERAL  
2010 PROTOTYPE CRITERIA SET PLAN 'C'

Sheet Description :  
**PLUMBING DETAILS  
& DIAGRAMS**

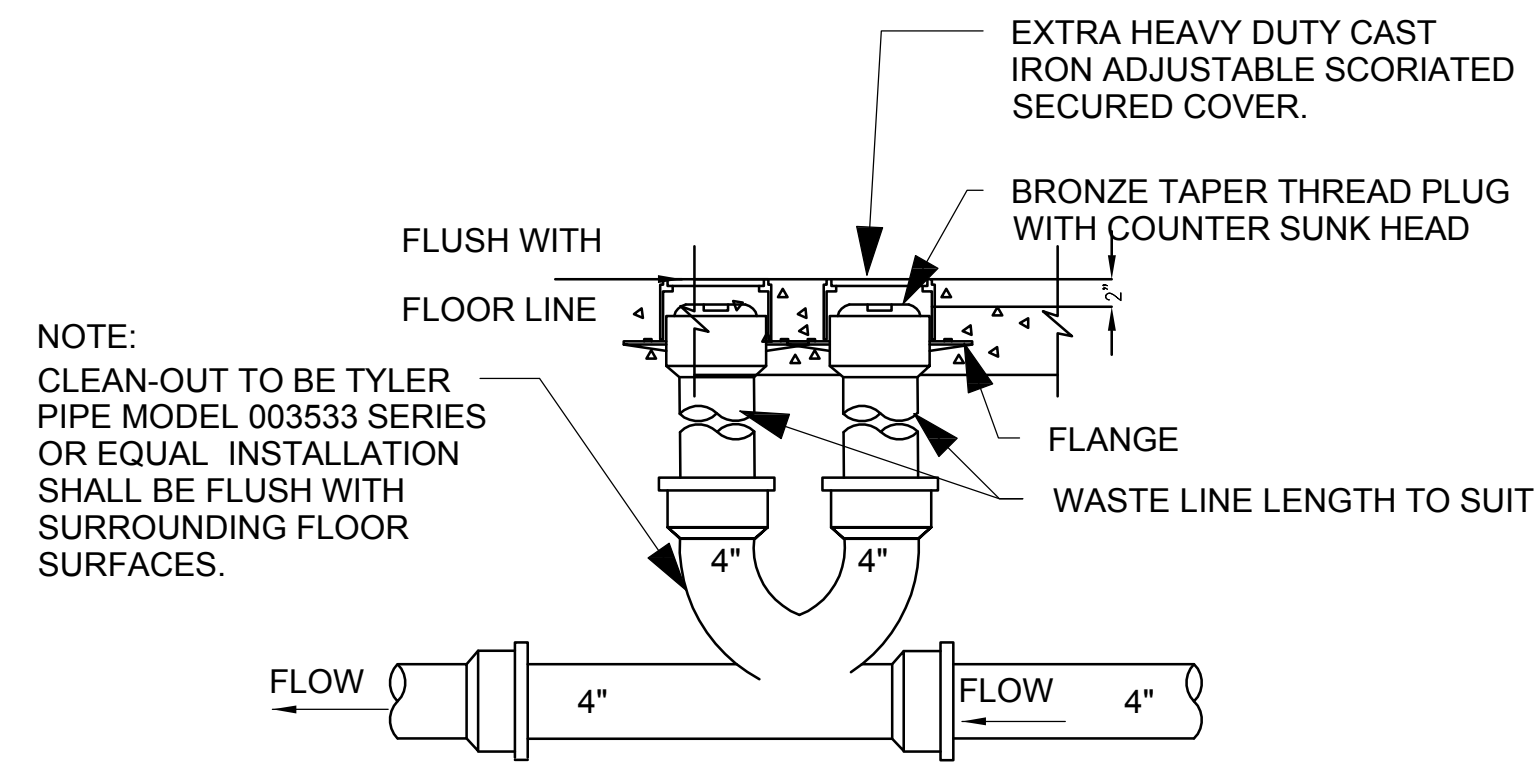
THIS DRAWING AND ITS COPIES ARE THE COPYRIGHT OF THE ARCHITECT. THEY MAY NOT BE USED FOR PROJECTS OTHER THAN THE DESIGNATED PROJECT WITHOUT THE SPECIFIC WRITTEN APPROVAL OF C. L. HELT ARCHITECT INC., AND OR CHESTER LEROY HELT, ARCHITECT

Drawn By :  
**C. THOMASON**  
Checked By :  
**C. THOMASON**

Revisions :  
①  
②  
③  
④

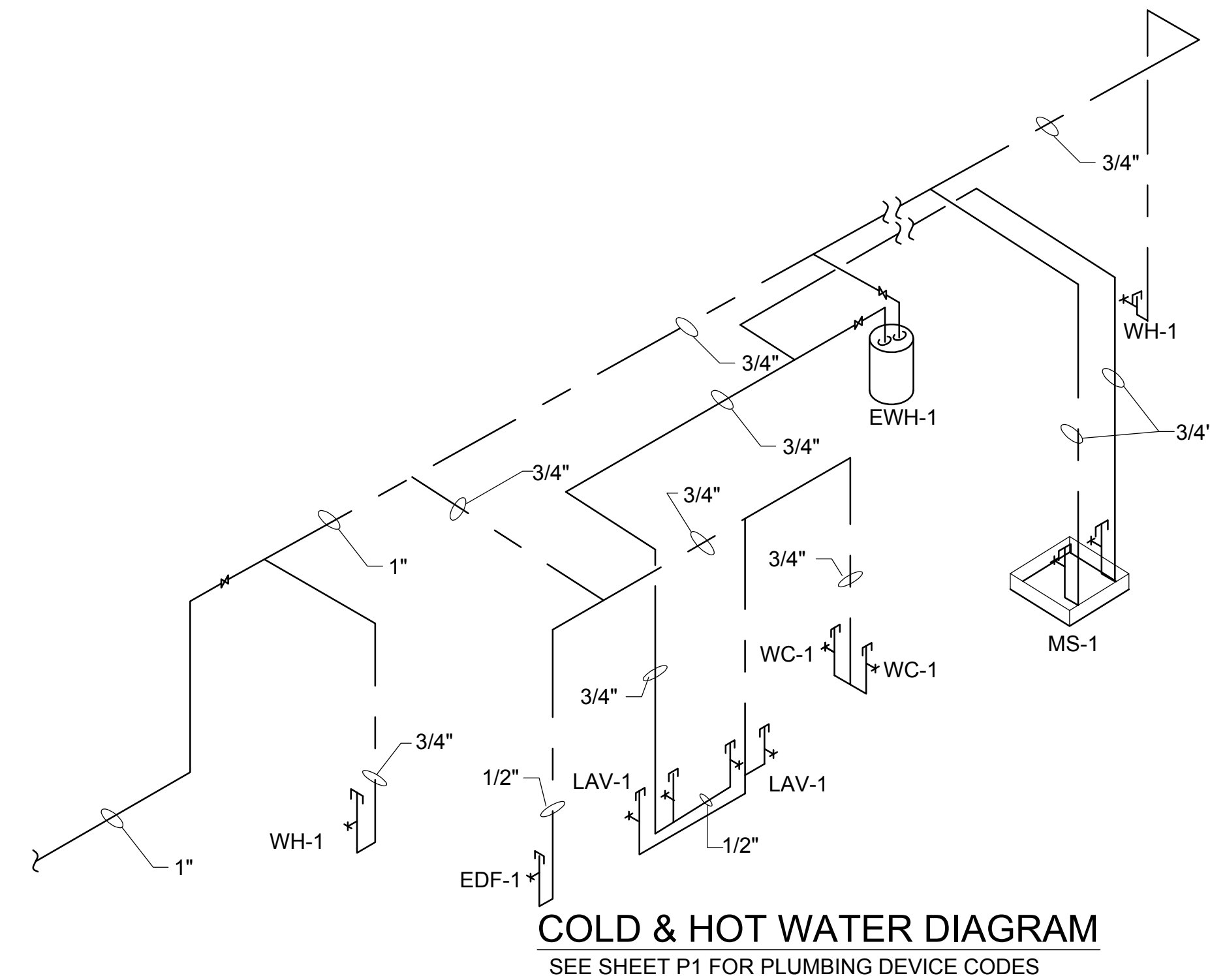
Seal  
Date :  
12/8/11

Sheet No.  
**P2**  
of 1

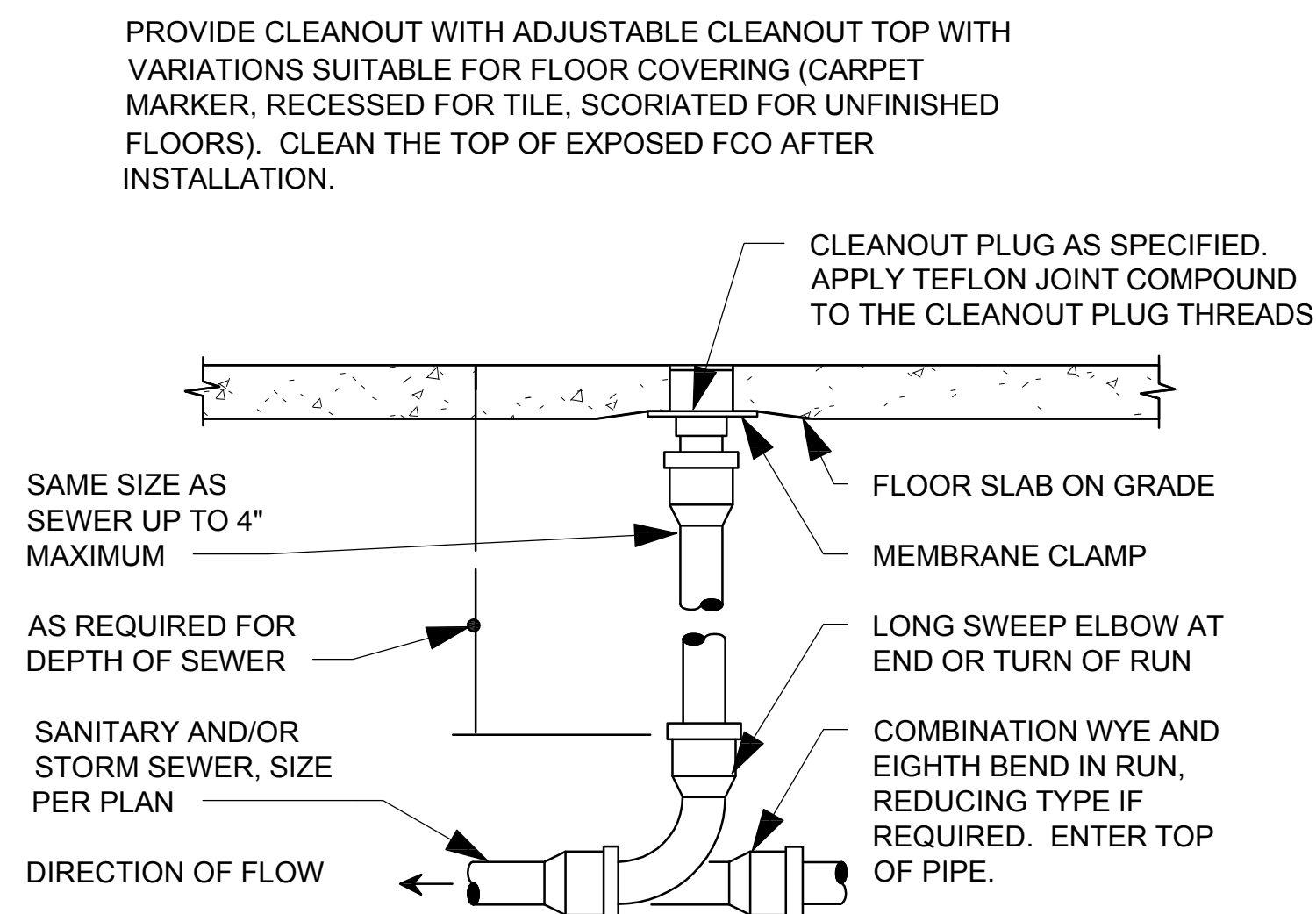


THIS DETAIL USED FOR 4" SANITARY LINE RUN BELOW FIXTURE RACKING. SEE PLANS.

1 2-WAY YARD CLEAN OUT DETAIL  
P2 N.T.S.

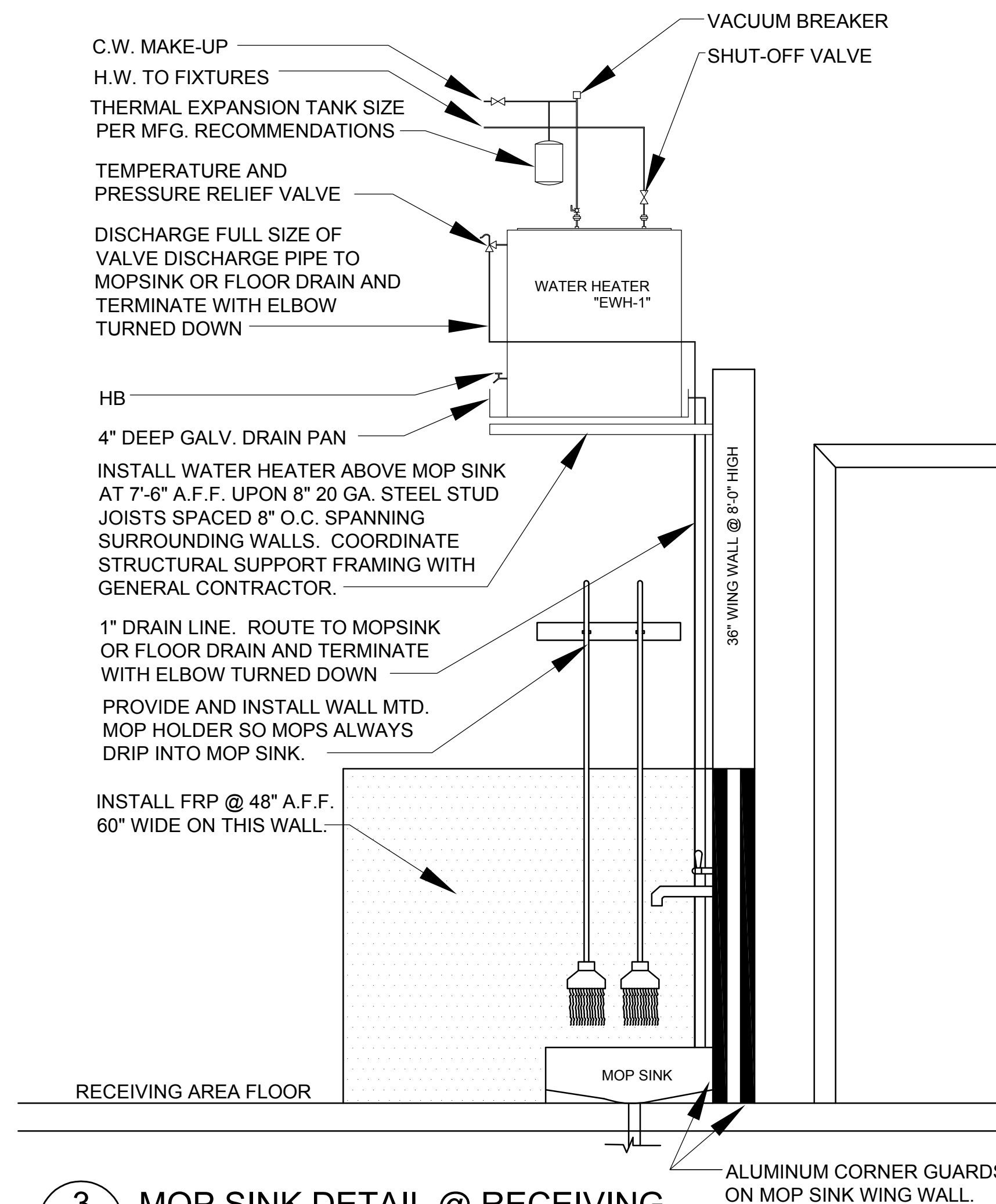


COLD & HOT WATER DIAGRAM  
SEE SHEET P1 FOR PLUMBING DEVICE CODES

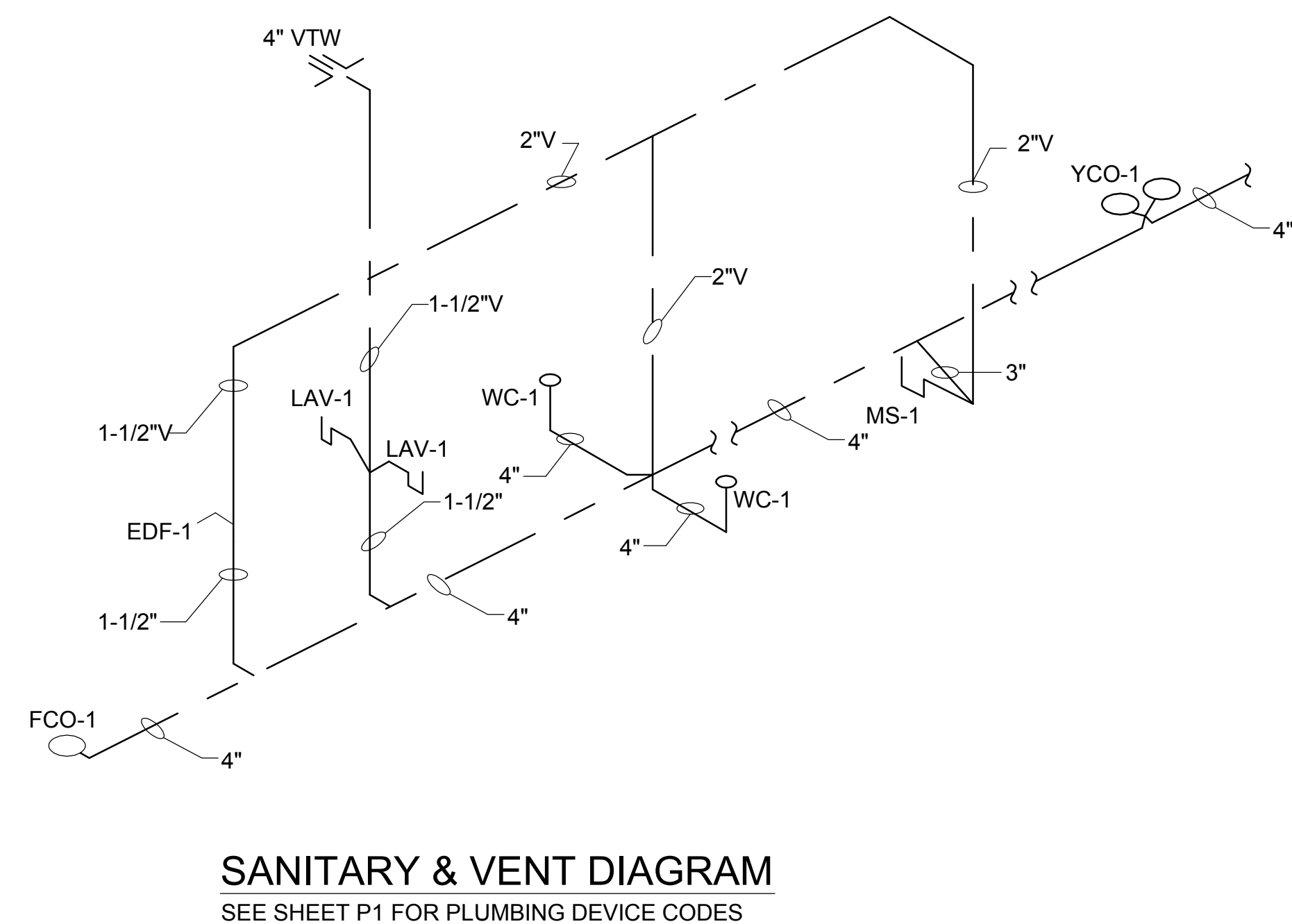


REFER TO SPECIFICATIONS AND SCHEDULE FOR MORE INFORMATION. LOCATE AT BUILDING EXIT, AT ENDS OF RUNS, AT TURNS OF PIPE GREATER THAN 45°, AT 50' INTERVALS ON STRAIGHT RUNS, AND/OR WHERE SHOWN ON PLANS AND RISERS. PROVIDE BACKFILL PER ARCHITECTURAL SPECIFICATIONS. LOCATE CLEANOUT WHERE THERE IS 18" CLEAR AROUND, FOR ACCESSIBILITY. CONSULT LOCAL CODES AND OFFICIALS FOR OTHER REQUIREMENTS.

2 FLOOR CLEAN OUT DETAIL  
P2 N.T.S.



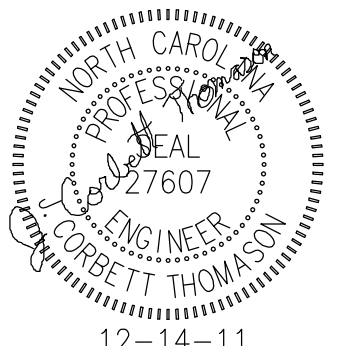
3 MOP SINK DETAIL @ RECEIVING  
P2 N.T.S.



SANITARY & VENT DIAGRAM  
SEE SHEET P1 FOR PLUMBING DEVICE CODES

RECEIVED 12/14/11  
BY PRIMAX CONSTRUCTION, INC.

J. CORBETT THOMASON  
2120 DILWORTH RD. EAST  
CHARLOTTE, NC 28203  
PH. 704-333-1020  
FAX 704-333-1008



12-14-11