

C.L. Helt, Architect Inc.

1136 Greenwood Cliff
Charlotte, NC 28204

Ph. 704-342-1686
Fx. 704-343-0054
E-MAIL CHETHELT @ CLHELT.COM

ARCHITECT'S PROJECT # 11235

Project #
DOLLAR GENERAL
FOR
PRIMAX PROPERTIES
YORK HIGHWAY (NC HIGHWAY 321)
GASTONIA, NC
BASED ON DOLLAR GENERAL
2010 PROTOTYPE CRITERIA SET PLAN 'C'

Sheet Description #
CONCRETE SUMMARY

THIS DRAWING AND ITS COPIES ARE THE COPYRIGHT OF THE ARCHITECT. THEY MAY NOT BE USED FOR PROJECTS OTHER THAN THE DESIGNATED PROJECT WITHOUT THE SPECIFIC WRITTEN APPROVAL OF C. L. HELT ARCHITECT INC., AND OR CHESTER LEROY HELT, ARCHITECT

Drawn By :
S. MILLER

Checked By :
D. MYERS

Revisions :
1
2
3
4

Seal
Date :
12/8/11

RECEIVED 12/14/11
BY PRIMAX CONSTRUCTION, INC.

Sheet No.
S2.C
of : **3**

GENERAL

The building shall be designed such that there is maintained an absolute minimum of 107'-5" x 68'-1" from face-of-column to face-of-column on the sales floor.

FOUNDATIONS

The concrete foundations shall be designed, detailed and constructed to provide for the safe, serviceable support of the pre-manufactured metal building structure and all prescribed loads applied thereto. The foundations shall conform to the latest editions of all applicable standards of the American Concrete Institute (ACI), the building code(s) enforced by the Authority Having Jurisdiction and these requirements.

The soils supporting the foundation shall be prepared and compacted in accordance with a geotechnical testing based investigation and site specific recommendations provided by a Professional Engineer registered to practice in the State where the project is located.

The slab on grade shall not be utilized to resist horizontal thrust forces at the base of the pre-engineered building frames. Tie beams below and separate from the building slab may be utilized.

The bearing materials shall be free of organic, expansive or corrosive material, and shall support the foundation in accordance with the following twenty five year criteria:

- Maximum differential movement due to either settlement or heave shall not exceed 1/2" over a distance of 50 feet.
- Maximum total movement due to either settlement or heave shall not exceed 1".

The foundations shall be of sufficient depth to bear below local frost depth where exposed, attain minimum design bearing pressure, achieve sufficient protection from settlement or heave, and where adjacent to existing construction, avoid application of lateral earth pressure to adjacent construction.

SLAB ON GRADE

The subgrade for the slab on grade shall be compacted and prepared in accordance with a geotechnical testing based investigation and site specific recommendations provided by a Professional Engineer registered to practice in the State where the project is located. The subgrade shall provide a minimum of 100 pounds per cubic inch (pci) modulus of sub-grade reaction and shall be proof-rolled to ensure that there are no pumping or soft zones.

The slab on grade shall conform to the latest editions of all applicable standards of the American Concrete Institute (ACI), the building code(s) enforced by the Authority Having Jurisdiction and these requirements. The slab on grade shall be a minimum of 4" thick and reinforced with a minimum 6" x 6" x W1.4 x W1.4 welded wire fabric located in the center of the slab. The concrete for the slab on grade shall contain a minimum of 564 lbs per cubic yard of Portland Cement. Fly ash is not allowed in the concrete mix design. The concrete aggregate shall meet ASTM C33, shall be well graded, and contain a nominal maximum aggregate size of at least 3/4".

Except at doors at the perimeter of the facility, the slab on grade shall be isolated from the building columns and any perimeter grade beams or walls. The slab on grade shall receive a hard steel trowel finish. Saw-cut contraction joints a minimum of 1/4 the depth of the slab shall be provided in both principal directions across the entire floor slab, spaced no further than 13 feet on center and providing panels with an aspect ratio no greater than 1.5:1. Refer to Control Joint Spacing Plan on sheet S3. The joints shall be cut within 12 hours of initial concrete placement and following 90 days the joints shall be filled flush with Polyurea joint filler, then shaved. Following finishing, the slab shall be cured with either "Retro-Guard Heavy Duty Stain Inhibitor & Sealer" or shall receive a water cure for a minimum of 7 days. The slab shall be protected from the effects of heat or wind as necessary to avoid any curling of the slab segments.

The slab shall conform to the following flatness and levelness criteria:

Flatness	No more than 1/8" +/- over any 10 feet
Levelness	No more than 1/8" +/- over any 20 feet
Tolerance Band for Entire Floor	+/- 0.375 inch

Failure to achieve the above criteria shall be cause for replacement of the offending segments or grinding/polishing at no cost to the Owner or Tenant.

POLISHED CONCRETE FLOOR SUMMARY

- A. This section includes the following:
1. Grinding & Polishing of Concrete
 2. Application of Retroplate 99 Densifier
 3. Application of Retro Guard.
 4. Installation of standard gray Polyurea joint fill.
 5. Mandatory pre-slab meeting.
- B. Related Work:
1. Section 03300 Cast-In-Place Concrete
- C. CORPORATE ACCOUNT MANAGER: CURTIS TURNBULL
PHONE: 888-942-3144
EMAIL: corporateaccounts@retroplatesystem.com

***ALL APPLICATORS ARE TO BE APPROVED IN WRITING ON ADVANCED FLOOR PRODUCTS LETTERHEAD REFERENCING DOLLAR GENERAL.

- A. Pre-Installation Conference:
1. Schedule and conduct pre-installation conference at Project site to establish guidelines and expectations for scheduling of floor treatment application, degree of polish, concrete finish specification, floor flatness, and similar issues. Ensure attendance at Pre-Installation Conference by at least:
 - A. Dollar General Project Manager
 - B. Flatwork Contractor
 - C. Landlord's Representative
 - D. Prime Contractor
 - E. Applicable Subcontractors
 - F. Certified Applicator
- B. Product Variations: Retroplate
1. The variegated colors and appearance are unique to each concrete surface and depend on the chemical composition, mix design, porosity, age, texture and color of the concrete substrate. Mottling and wide variations in color and intensity may occur. If contaminants remain on the surface, the penetration of the Retroplate may be blocked. Concrete from different loads or pours, and in patched areas, may appear significantly different from adjacent areas, when treated with Retroplate.

- C. Fly Ash and Fiber Mesh:
1. Fly Ash and Fiber Mesh are not allowed in Concrete.

QUALITY ASSURANCE

- A. Installer Qualifications:
1. Use a Dollar General certified installer with adequate number of skilled workman who are approved in writing by the manufacturer for Dollar General projects, NO EXCEPTIONS.
 2. Applicator shall be familiar with the specified requirements and the methods needed for proper performance of work of this section. Applicator must have availability of proper equipment to perform work within scope of this project on a timely basis. Applicator should have successfully performed a minimum of 5 projects of at least 6000 square feet each.
- B. Manufacturer's Qualifications:
1. Provide letter of certification from Advanced Floor Products stating that installer is certified for Dollar General Projects. Not all applicators are approved.

- C. Protection:
1. No satisfactory chemical or cleaning procedure is available to remove petroleum stains from the concrete surface. Prevention is therefore essential.
 - A. All Hydraulic powered equipment must be diapered to avoid staining of the concrete.
 - B. No trade will park vehicles on the inside slab. If necessary to complete their scope of work, drop cloths will be placed under vehicles at all times.
 - C. No pipe cutting machine will be used on the inside floor slab.
 - D. Steel will not be placed on interior slab to avoid rust staining.
 - E. All equipment must be equipped with non-marking tires.
 - F. Do not drag or drop equipment or material across the slab which will scratch or chip it.
 - G. Protect the floor from drywall mud splatters.

DELIVERY, STORAGE AND HANDLING

- A. Deliver materials in original containers, with seals unbroken, bearing manufacturer labels indicating brand name and directions for storage.
- B. Dispense special concrete finish material from factory numbered and sealed containers. Maintain record of container numbers.

PROJECT CONDITIONS

- A. Environmental limitations: Comply with manufacturer's written instructions for substrate temperature and moisture content, ambient temperature and humidity, ventilation, and other conditions affecting topping performance.
1. Concrete must have an average Floor Flatness rating of at least 35 +/- 5.
 2. Concrete must have an average Floor Levelness rating of at least 30 +/- 5.
 3. Concrete must be cured a minimum of 28 days or as directed by the manufacturer before application of Retro Plate can begin.
 4. Application of Retro-Plate shall take place prior to installation of equipment, thus providing a complete, uninhibited concrete slab for application.
 5. Close areas to traffic during floor application.
 6. The completed Retroplate slab will be covered to prevent damage by the other trades during store completion.
 7. Landlord will be responsible for providing a dumpster for disposal of products.

PART 2 - PRODUCTS MATERIALS AND MANUFACTURERS:

- A. HARDENING/SEALING AGENT (No substitution):
1. Retroplate 99 manufactured by Advanced Floor Products, Inc., P.O. Box 50533, Provo, Utah 84605.
Curtis Turnbull 888-942-3144
Corporateaccounts@retroplatesystem.com
 - A. Performance Criteria:
 - i. Abrasion Resistance: ASTM C779 - Up to 400% increase in abrasion resistance.
 - ii. Impact Strength: ASTM C805 - Up to 21% increase impact strength.
 - iii. Ultra Violet Light and Water Spray: ASTM G23-81 - No adverse effect to ultra violet & water spray.
 - iv. Reflectivity: Up to 30% increase in reflectivity.
 2. Polyurea joint filler to be used in all control joints. Standard gray color. All joints are to be filled at the discretion of the certified installer.
 3. Retroguard Heavy Duty Stain Inhibitor and Sealer. (No substitution).
 4. Ameripolish "Edge Tint" (Midnight Black).

- B. DIAMOND GRINDING AND POLISHING DISCS:
Only grinding and polishing discs distributed by Advanced Floor Products are to be used. (No substitutions.)

RELATED MATERIALS:

- A. Water.
1. Potable and on site.
- A. Temporary power for grinding and polishing equipment will be provided by installer.

PART 3 - EXECUTION SURFACE CONDITIONS:

- A. GC or rep. to examine substrate, with installer present, for conditions affecting performance of finish. Correct conditions detrimental to timely and proper work. Do not proceed until unsatisfactory conditions are corrected.
- B. GC or rep. to verify that base slab meets finish and surface profile requirements in Division 3 Section, Cast-In-Place Concrete, and Project Conditions above.
- C. Prior to application, verify that floor surfaces are free of construction latent's. ONCE APPLICATOR ACCEPTS THE FLOOR THEY AND THEY ALONE ARE SOLELY RESPONSIBLE FOR THE SPECIFICATIONS TO BE MET.

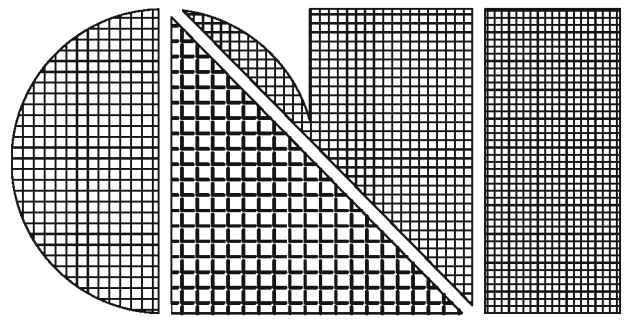
WORKMANSHIP AND CLEANING:

- A. The premises shall be kept clean and free of debris at all times.
- B. Remove spatter from adjoining surfaces, as necessary.
- C. Repair damages to surface caused by cleaning operations.
- D. Remove debris from jobsite in accordance with local regulations.

SPECIFIC QUALIFICATIONS / EXCLUSIONS:

(NOTE: This section, though not mandatory, will greatly improve the understanding and necessary procedures for performing work properly.)

- A. No other trades will be allowed in the area being worked on due to possible safety and floor contamination.
- B. The areas to receive the Retroplate 99 System will be delivered to the applicator in clean and swept condition. All equipment and supplies will be removed prior to turning the space over to the applicator. If the applicator is required to clean the space, and/or move other's supplies, staging and equipment, it will be done at time and materials.
- C. PROTECTION OF THE FLOOR FOLLOWING THE APPLICATION OF THE RETROPLATE 99 SYSTEM AND POLISHING IS THE RESPONSIBILITY OF THE OWNER.



C.L. Helt, Architect Inc.

1136 Greenwood Cliff
Charlotte, NC 28204

Ph. 704-342-1686
Fx. 704-343-0054
E-MAIL CHETHELT @ CLHELT.COM

ARCHITECT'S PROJECT # 11235

Project #
DOLLAR GENERAL
FOR
PRIMAX PROPERTIES
YORK HIGHWAY (NC HIGHWAY 321)
GASTONIA, NC
BASED ON DOLLAR GENERAL
2010 PROTOTYPE CRITERIA SET PLAN 'C'

Sheet Description #
RETROPLATE WORK
WORK ORDER
OPTION 'C'

THIS DRAWING AND ITS COPIES ARE THE COPYRIGHT OF THE ARCHITECT. THEY MAY NOT BE USED FOR PROJECTS OTHER THAN THE DESIGNATED PROJECT WITHOUT THE SPECIFIC WRITTEN APPROVAL OF C. L. HELT ARCHITECT INC., AND OR CHESTER LEROY HELT, ARCHITECT

Drawn By :
S. MILLER

Checked By :
D. MYERS

Revisions :
1
2
3
4

Seal
Date :
12/8/11

Sheet No.
S3.C
of : **3**

ADVANCED FLOOR PRODUCTS CORPORATE ACCOUNT
DOLLAR GENERAL STORES WORK ORDER

National Account Number 2008-07

Revised 05/07/09

New Store Construction - Approximately 7352 Sq Feet of RetroPlate Per Store

The Sales area and hall will be finished to a **High gloss level 3 shine**.

Definition of expected shine

High Gloss: Reflective shine in which, at a distance of 30', the reflectivity is clearly defined.

- 1) The sales area and hall are the only areas to Receive Polishing
- 2) The receiving area, offices and restrooms will be finished by the landlords GC with Silicone Acrylic Concrete sealer
- 3) Polyurea joint fill (Standard Gray) will be required.
- 4) Control joints installed per recommendation of structural engineer at slab design per "Slab on Grade" notes on sheet S2.A and minimum performance requirements. The exact placement of control joints shall be in accordance with the site specific recommendation of the Registered Professional Structural Engineer as part of the slab design. Control joints shall be placed per the Engineer's recommendation to limit cracking based on the site specific structural slab design. The minimum spacing layout is shown below.

Projects will be completed using only Advanced Floor Products products

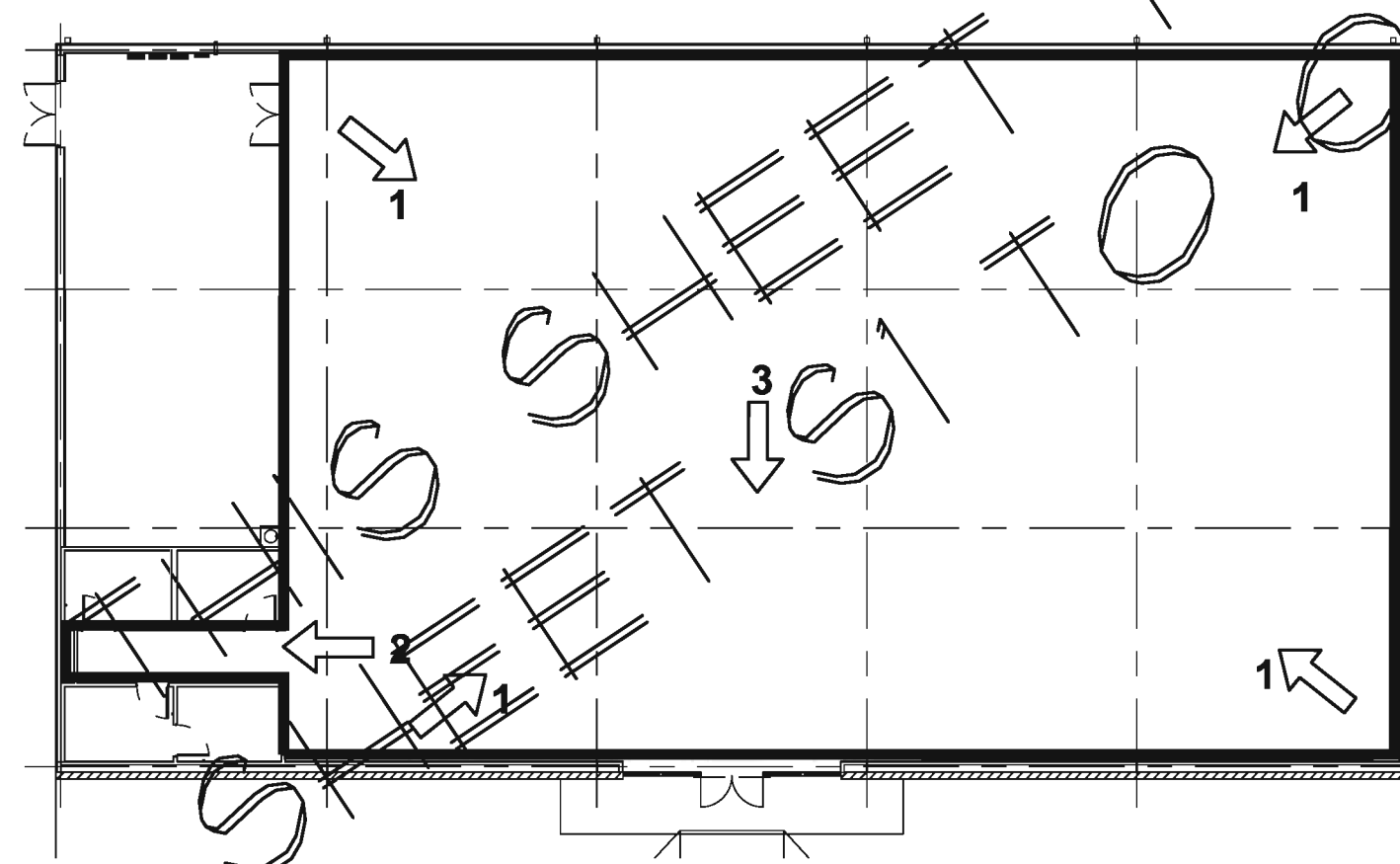
Product Requirements

- 1) RetroPlate 99 (no substitute densifier) 55 Gals per store.
- 2) RetroGuard 2-5 Gallon pails
- 3) Ameripolish Edge Tint (Part A&B) (Midnight Black)
- 4) Standard Poly Urea Gray joint fill (Applicators choice)
- 5) Diamonds purchased in sets to equip the particular machine. Grits needed:
 - a) 40, 50 or 80 metal diamonds
 - b) 100/120, 200/220, 400, 800 resin diamonds
 - c) 800, 1500 and 3000 grit Twister pad is to be used to burnish.

All work will be completed per this work order.

Qualifications:

- 1) All applicators of the RetroPlate System must have the work experience and be certified by Advanced Floor Products of Springville, Utah.
- 2) Applicator must possess a letter of Certification from Advanced Floor Products 1203 W, Spring Creek Place, Springville, UT 84663.
 - a) The Applicator must have satisfactorily installed RetroPlate in a minimum of 5 projects of at least 6,000 sq feet.
 - b) The Certified person in the company must be present on the job during all phases of the installation.
 - c) Applicator will provide the recommended grinding machines and Advanced Floor Products Diamonds
- 3) EQUIPMENT:
 - a) Minimum number of machines need for the projects (2-32 Planetary)
 - b) Applicators will provide the electrical generators as necessary for their equipment.



1 PHOTO KEY PLAN
S3.C N.T.S.

SCOPE OF WORK

The following RetroPlate process will be used as a guide for RetroPlate process and is the Manufacturers application recommendation. Keep in mind that the applicator will finish the floor to a nice level 3 high gloss shine. **Applicators will alter the steps as necessary to achieve the required level 3 high gloss shine.** (See definition of shine)

- 1) Start the Grind using 40, 50 or 80 grit Metal pad depending on the need. (Multiple passes will be required for each step) Make sure that the previous "Scratch Pattern" is taken out before proceeding.
- 2) Clean the floor.
- 3) Grind floor using 100/120 grit pad.
- 4) Clean the floor
- 5) Grind the floor with a 200/220 grit pad.
- 6) Clean floor
- 7) Apply RetroPlate 99 to the surface at 200 sq ft per gallon, scrubbing product in into floor and allowing product to soak until turning slick. If it becomes sticky, dampen the sticky areas with water and scrub in, leaving the product on the floor for 60 minutes.
- 8) Clean up excessive RetroPlate 99. Let the floor dry, overnight if possible.
- 9) Continue the polishing process using 400 and 800 Grit pads. (800/1500/3000 Grit Twister pad, multiple passes, to finish.)
- 10) Ameripolish Edge Tint (Midnight Black) will be applied around the perimeter of the sales floor and hall extending out 4 inches.
- 11) Edge tint will be applied using a Paasche sprayer at 40psi.
- 12) Edge tint will be applied with a cut off line under the door edges at the receiving, office and restroom entrances.
- 13) Chase, clean and fill all control joints with Standard Gray polyurea joint fill.
- 14) Apply RetroGuard sealer to the entire sales floor and hall surface at a rate of 1200-1500 ft per gallon.

FLOORS WILL BE FINISHED TO A MINIMUM LEVEL 3 HIGH GLOSS SHINE

- 1) High Gloss: Reflective shine in which, at a distance of 30', the reflectivity is clearly defined.
- 2) Sample photos attached of required results

Minimum control joint layout:
Let to right at column lines and centered in between as shown

Minimum control joint layout:
Front to back divided into 5 equal bays and centered as shown

REQUIRED PHOTOS:

The following layout shows the required photos to be taken at completion. (Make sure the overhead lights are on for your photos.)

1. From each corner of the sales area, facing the opposite corner.
2. Hall, one picture from each end of the hall).
3. Standing 10' from the entrance facing the entrance.

CONCRETE FLOOR CONDITIONS:

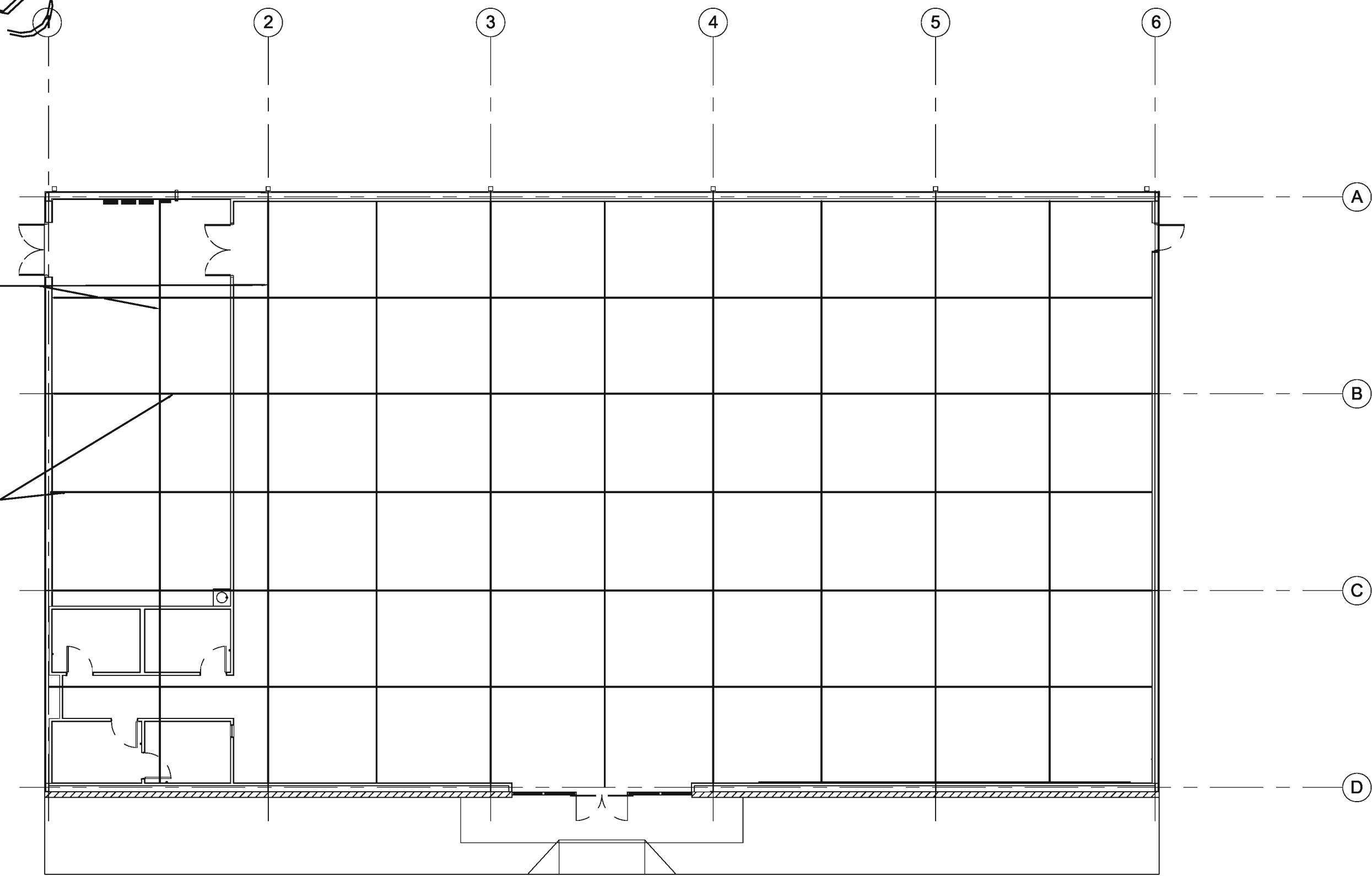
- 1) Sealing, Hardening and Polishing of Concrete Surface.
 - a) Concrete must be in place a minimum of 28 days or as directed by the manufacturer before application can begin.
 - b) Concrete Floor will be finished to a minimum FF of 35 +/- 5 and FL of 30 +/- 5.
 - c) Only a certified applicator shall apply RetroPlate 99. Applicable procedures must be followed as recommended by the product manufacturer and as required to match approved test sample.
 - d) Polish to the required level 3 high gloss shine.

WORKMANSHIP AND CLEANING

- 1) The premises shall be kept clean and free of debris at all times.
- 2) Remove spatter from adjoining surfaces.
- 3) Remove debris from jobsite. Dispose of materials in separate, closed containers in accordance with local regulations.
- 4) Upon completion of the installation of the Retroplate system, the Applicator will meet with the Supervisor of Construction and /or the Dollar General Construction Manager. They will walk through and will sign off that the work is satisfactory.
- 5) Upon completion email completion photos with store location, address and date completed to:
 - a) corporateaccounts@retroplatesystem.com

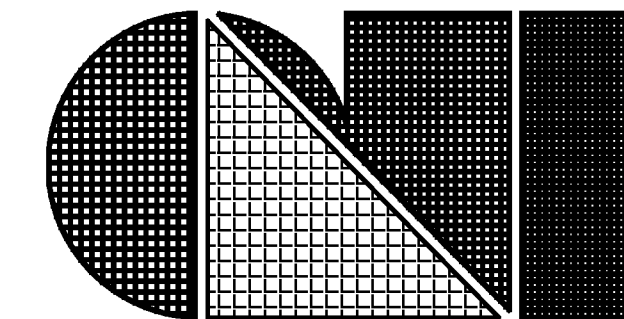
(See below for required photos)

Questions regarding this work order procedure: contact Curtis Turnball 888-942-3144 at Corporate Accounts.



2 CONTROL JOINT SPACING PLAN
S3.C N.T.S.

RECEIVED 12/14/11
BY PRIMAX CONSTRUCTION, INC.



C.L. Helt, Architect Inc.

1136 Greenwood Cliff
Charlotte, NC 28204

Ph. 704-342-1686
Fx. 704-343-0054
E-MAIL CHETHELT @ CLHELT.COM

ARCHITECT'S PROJECT # 11235

Project #
DOLLAR GENERAL
FOR
PRIMAX PROPERTIES
YORK HIGHWAY (NC HIGHWAY 321)
GASTONIA, NC
BASED ON DOLLAR GENERAL 'C'
2010 PROTOTYPE CRITERIA SET PLAN 'C'

Sheet Description #
FOUNDATION PLAN

THIS DRAWING AND ITS COPIES ARE THE COPYRIGHT OF THE ARCHITECT. THEY MAY NOT BE USED FOR PROJECTS OTHER THAN THE DESIGNATED PROJECT WITHOUT THE SPECIFIC WRITTEN APPROVAL OF C. L. HELT ARCHITECT INC. AND OR CHESTER LEROY HELT, ARCHITECT

Drawn By :
S. MILLER

Checked By :
D. MYERS

Revisions :
①
②
③
④

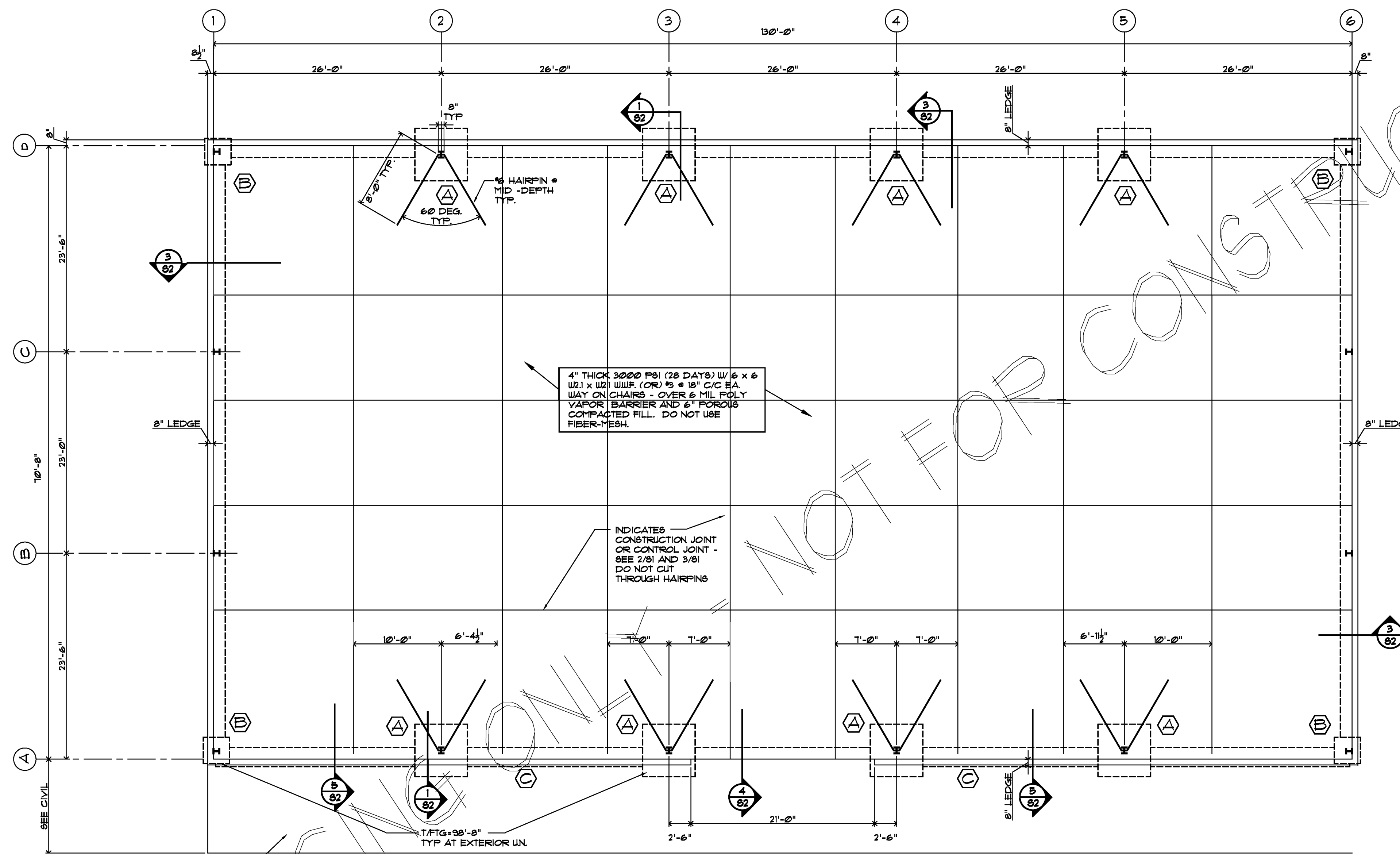
Seal

Date :

RECEIVED 12/14/11
BY PRIMAX CONSTRUCTION, INC.

12/8/11

Sheet No.
S1
of 2



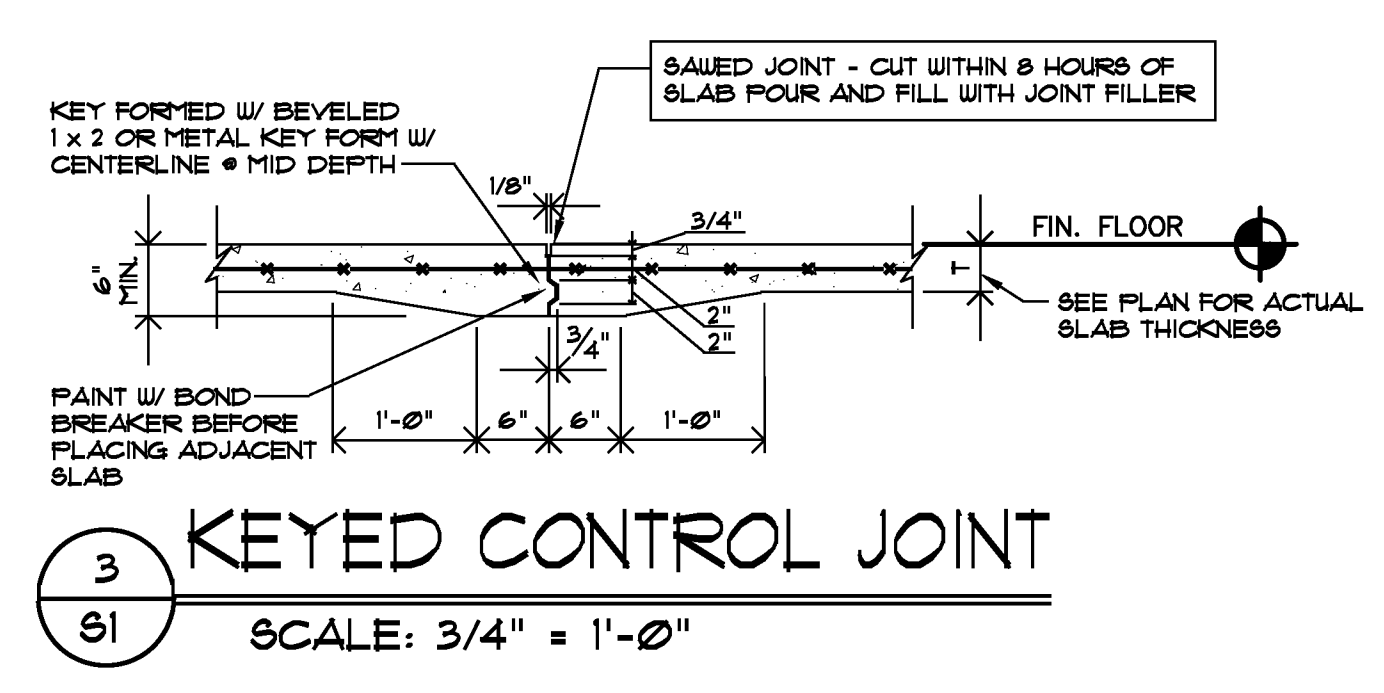
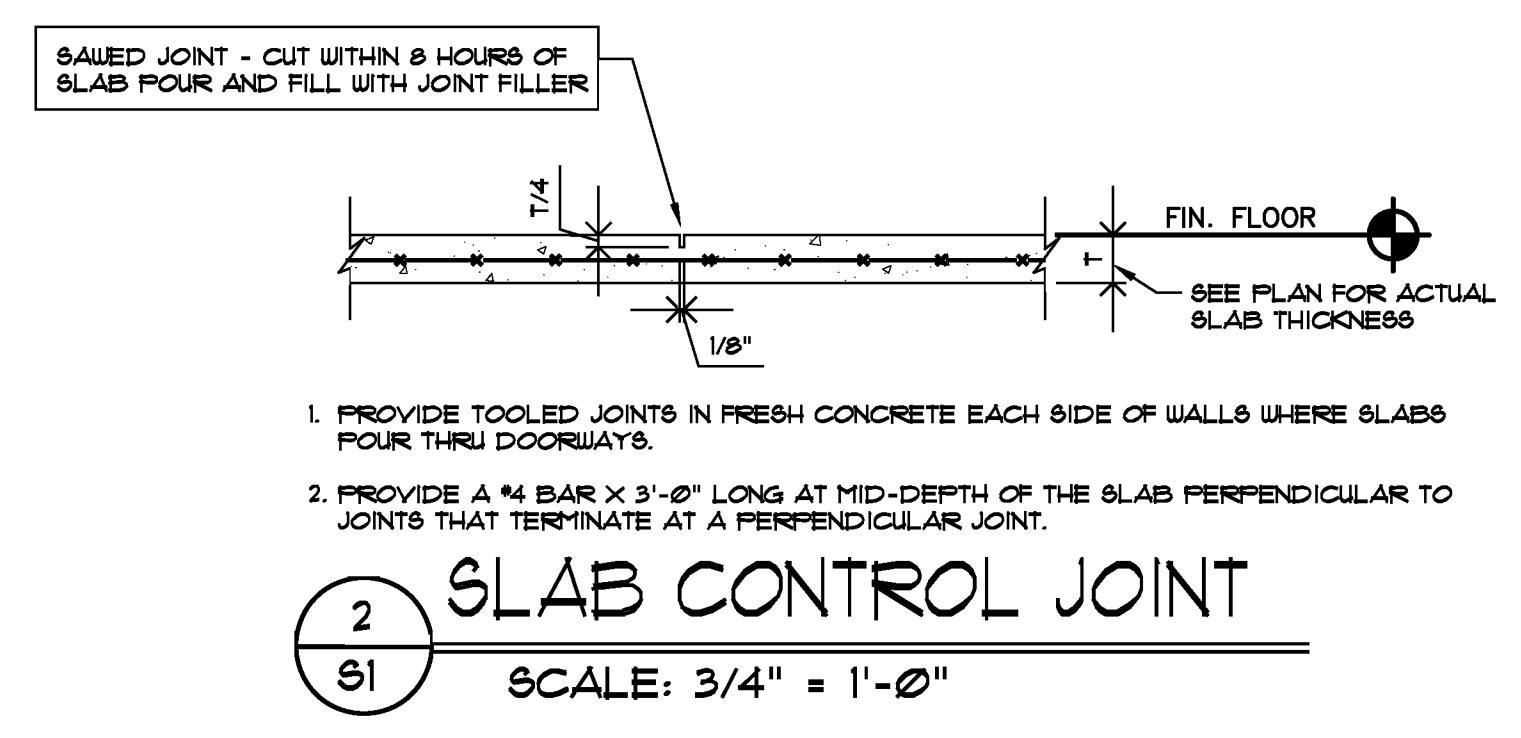
SAWN JOINTS IN SIDEWALK - MAX AREA BETWEEN JOINTS = 100 SQFT.

① FOUNDATION PLAN
SCALE: 1/8" = 1'-0"

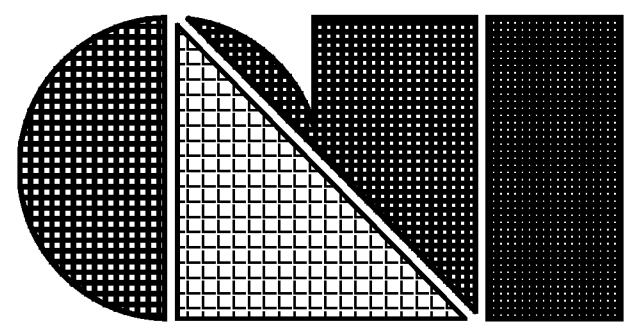
GENERAL STRUCTURAL NOTES:
GEOLOGICAL INVESTIGATION RECOMMENDATIONS OF THE SOIL BELOW THE BUILDING AND PARKING LOT ARE TO BE FOLLOWED, AS WELL AS ANY ACCORDANCE WITH DOT STANDARDS FOR SITE WORK AS REQUIRED.
PROVIDE A FOUNDATION DRAIN AT THE BUILDING PERIMETER THAT COMPLES WITH IBC SECTION 1807.4.2 PREPARED PLASTIC PIPE IS ACCEPTABLE.

CIVIL COORDINATION NOTE:
GC TO VERIFY GRADINGS PER CIVIL DRAWINGS, CONTACT STRUCTURAL ENGINEER OR ARCHITECT TO DETERMINE IF STRUCTURAL MODIFICATIONS ARE NECESSARY.

FOOTING SCHEDULE		
MARK	DESCRIPTION	REINF.
(A)	6'-0" x 6'-0" x 1'-6"	(3) # 5 ELL. TOP & BOT.
(B)	3'-0" x 3'-0" x 1'-4"	(3) # 5 ELL. TOP & BOT.
(C)	2'-0" x 1'-0" CONT	(2) # 5 CONT BOT.



FOR PERMIT/PRICING ONLY



C.L. Helt, Architect Inc.

1136 Greenwood Cliff
Charlotte, NC 28204

Ph. 704-342-1686
Fx. 704-343-0054
E-MAIL CHETHELT @ CLHET.COM

GENERAL STRUCTURAL NOTES

- THE GENERAL STRUCTURAL NOTES ARE INTENDED TO AUGMENT THE DRAWINGS AND SPECIFICATIONS. SHOULD CONFLICTS EXIST BETWEEN THE DRAWINGS AND SPECIFICATIONS AND THE GENERAL STRUCTURAL NOTES, THE STRICTEST PROVISION SHALL GOVERN.
- GOVERNING CODE: NC BUILDING CODE - LATEST APPROVED EDITION.
- SEE STRUCTURAL CALCS FOR DESIGN SOIL BEARING PRESSURE. LIVE LOADS REDUCED IN ACCORDANCE WITH THE GOVERNING CODE. THE PROTOTYPE FOUNDATION DESIGN SHOWN IS BASED ON SOIL BEARING PRESSURE OF 2500 PSF.
- DESIGN WIND SPEED: 90 MPH EXPOSURE CLASSIFICATION: B USE FACTOR: 1.0 LIVE LOAD: 20 PSF MECHANICAL LOAD: 5 PSF LOCAL WIND LOAD: 10 PSF
- SEISMIC: SEE METAL BUILDING DRAWINGS
- MECHANICAL FRAMING LOADS, OPENINGS, AND STRUCTURE IN ANY WAY RELATED TO MECHANICAL REQUIREMENTS ARE SHOWN FOR DESIGN PURPOSES ONLY. CONTRACTOR SHALL OBTAIN APPROVAL OF MECHANICAL AND OTHER TRADES BEFORE PROCEEDING WITH SUCH PORTIONS OF THE WORK. EXCESS COST RELATED TO VARIATION IN MECHANICAL REQUIREMENTS TO BE BORNE BY MECHANICAL CONTRACTOR.
- THE STRUCTURE IS DESIGNED TO BE SELF-SUPPORTING AND STABLE AFTER THE BUILDING IS FULLY COMPLETED. IT IS SOLELY THE CONTRACTOR'S RESPONSIBILITY TO DETERMINE ERECTION PROCEDURE AND SEQUENCE, AND TO INSURE THE SAFETY OF THE BUILDING AND ITS COMPONENT PARTS DURING ERECTION. THIS INCLUDES THE ADDITION OF WHATEVER TEMPORARY BRACING, GUY OR TIE-DOUN LOADS, ETC. TO BE NECESSARY. EXCESS COST MATERIAL SHALL REMAIN THE CONTRACTOR'S PROPERTY AFTER COMPLETION OF THE WORK.
- IT IS SOLELY THE CONTRACTOR'S RESPONSIBILITY TO FOLLOW ALL APPLICABLE SAFETY CODES AND REGULATIONS DURING ALL PHASES OF CONSTRUCTION.
- THE CONTRACTOR IS RESPONSIBLE FOR VERIFYING ALL DIMENSIONS AND CONDITIONS RELATIVE TO EXISTING CONSTRUCTION AND EXISTING SERVICE ON THE SITE.
- THE CONTRACTOR SHALL VERIFY ALL DIMENSIONS AND LOCATIONS OF EXISTING WALLS, FOUNDATIONS, ETC. WITH THE ARCHITECTURAL DRAWINGS AND METAL BUILDING DRAWINGS PRIOR TO PROCEEDING WITH THE WORK.

REINFORCED CONCRETE

- SPECIFICATIONS AND STANDARDS: UNLESS SPECIFICALLY SHOWN OTHERWISE, ALL CONCRETE WORK, DETAILS, FABRICATION AND PLACING OF BARS AND CONCRETE SHALL BE GOVERNED BY THE LATEST REVISIONS OF:
 - A. ACI 308, ACI 309 AND ACI 318
 - B. CRSI RECOMMENDED PRACTICE FOR PLACING REINFORCING BARS
 - C. ACI 308 AND ACI 309 FOR WINTER AND HOT WEATHER CONCRETING RESPECTIVELY.
 THE CONTRACTOR SHALL AT ALL TIMES HAVE A COPY OF THE RELEVANT SPECIFICATIONS QUOTED ABOVE ON THE SITE AND THE SUPERVISORY PERSONNEL SHALL BE THOROUGHLY FAMILIAR WITH THE CONTENTS THEREOF.
- CONTINGENCIES:
 - A. PROVIDE LEAN CONCRETE UNDER FOUNDATIONS FOR EARTH FILL DUE TO ACCIDENTAL OVER EXCAVATION 4 FOOT SPOTS.
- CONCRETE REQUIREMENTS AND LOCATION IN JOB:

CLASS	LOCATION	FINISH	REQUIREMENTS
I	FOOTINGS	3000 PSI	3" TO 5" SLUMP
II	INTERIOR SLAB	3000 PSI	3" TO 5" SLUMP
III	EXTERIOR CONCRETE	4000 PSI	3% V. N. ENTRAINED AIR (3" TO 5" SLUMP)
IV	MASONRY GROUT	3000 PSI	8" TO 10" SLUMP 3/4" MAX AGGREGATE

 SUBMIT CONCRETE MIXES FOR APPROVAL IN ACCORDANCE WITH ACI 301 BEFORE PLACING ANY CONCRETE.
- REINFORCING REQUIREMENTS:
 - A. BARS: ASTM A636, A636, A671 - GRADE 60
 - B. WELDED WIRE FABRIC: ASTM A65
- FOOTINGS:
 - A. DOGUELS IN FOOTINGS TO MATCH VERTICAL WALL, COLUMN OR PIER REINFORCING.
 - B. BEND ALL BARS 34 DIAMETERS AROUND CORNERS OF WALL AND FOOTING. BARS AT THE INSIDE FACE OF THE CORNER SHALL BE CONTINUED ACROSS TO THE OUTSIDE AND THEN BENT.
- SPLICES:
 - A. NO SPLICES IN BEAM JOINT OR SLAB STEEL UNLESS SPECIFICALLY SHOWN OTHERWISE.
 - B. COMPRESSION SPLICES: LAP 36 DIAMETERS
 - C. TENSION SPLICES: WHEN PERMITTED: LAP IN ACCORDANCE WITH THE ACI CODE.
 - D. LAP WELDED WIRE FABRIC ONE (1) SPACE + 2" AT ALL EDGES AND ENDS OF SHEET.

STRUCTURAL MASONRY

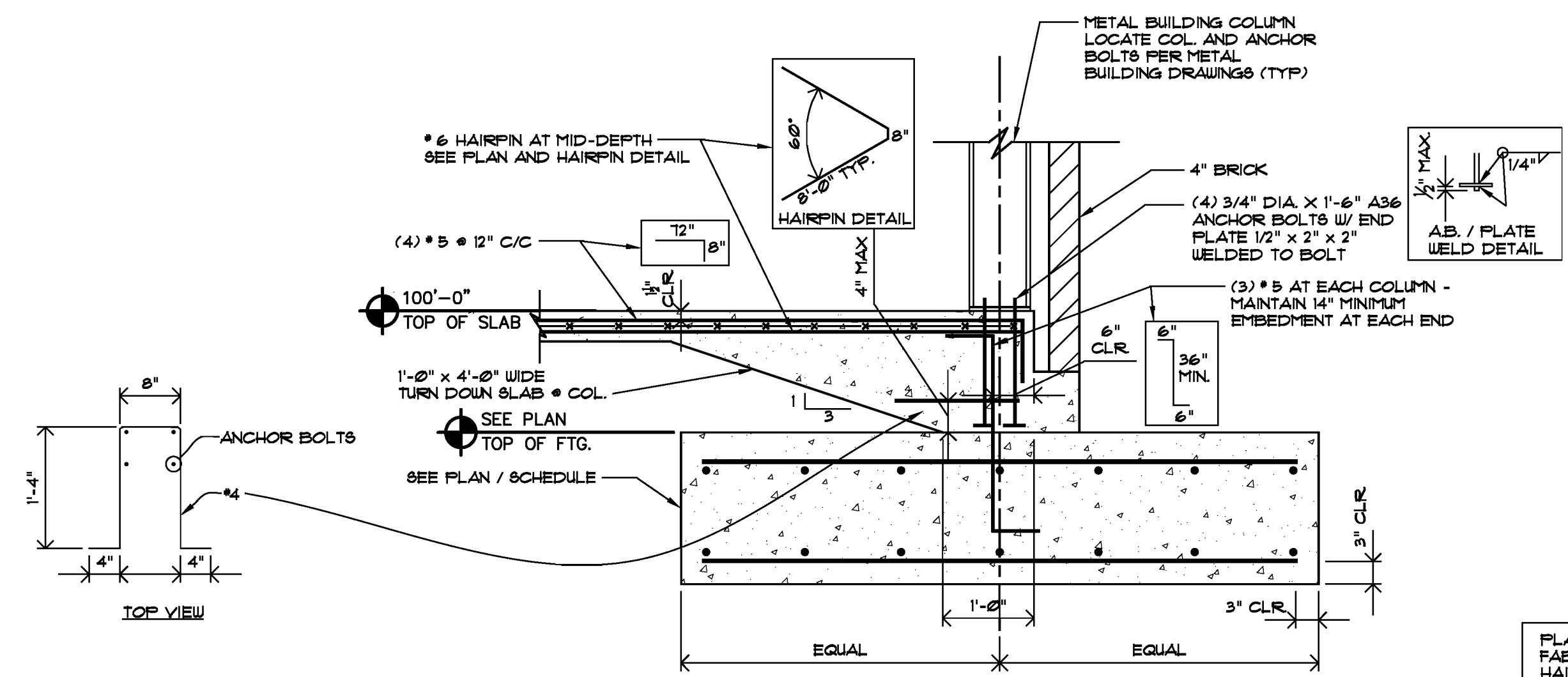
- MASONRY MATERIALS:
 - A. HOLLOW AND SOLID LOAD BEARING CONCRETE MASONRY UNITS - ASTM C210 TYPE I - NORMAL WEIGHT MINIMUM COMPRESSIVE STRESS + 1750 PSI
 - B. CONCRETE BRICK - ASTM C85 GRADE N
- MORTAR:
 - A. CMU - ASTM C210 TYPE S
 - B. BRICK - ASTM C210 TYPE N
- COARSE MASONRY GROUT: SEE CONCRETE REQUIREMENTS IN REINFORCED CONCRETE GENERAL NOTES.
- MASONRY REINFORCEMENT:
 - HORIZONTAL JOINT REINFORCEMENT: 9 GA DEFORMED WIRE, LADDER TYPE REINFORCEMENT.
 - IN EVERY SECOND BLOCK COURSE, FULL HEIGHT, AND WHERE SHOWN ON THE DRAWINGS.
 - IN FIRST BED JOINT ABOVE AND BELOW OPENINGS, EXTENDING 24" BEYOND OPENING.
 - LAP REINFORCEMENT A FULL WIDTH AT CORNERS AND INTERSECTIONS.
- REINFORCED MASONRY:
 - A. INSTALL REINFORCING BARS IN SIZES SHOWN ON DRAWINGS, ACCURATELY IN LOCATIONS SHOWN.
 - B. GROUT BLOCK WITH COARSE MASONRY GROUT VIBRATED IN PLACE TO FILL ALL VOIDS AND INTERSTICES. FOLLOW RECOMMENDATIONS OF MCHATEL NO. 23A.

STRUCTURAL STEEL

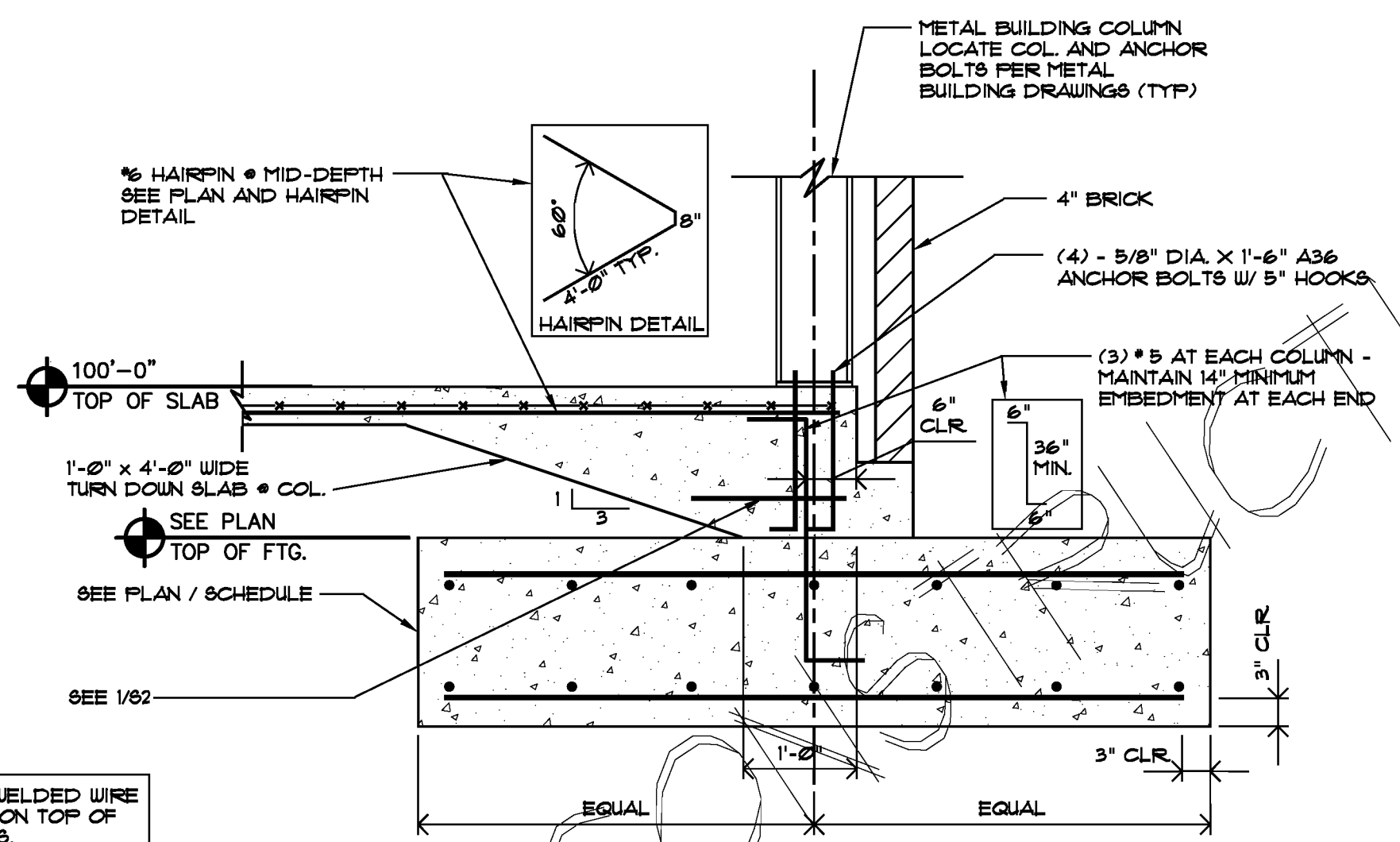
- SPECIFICATIONS AND STANDARDS: UNLESS SPECIFICALLY SHOWN OTHERWISE, DESIGN, FABRICATION AND ERECTION SHALL BE GOVERNED BY THE LATEST REVISIONS OF:
 - A. AISC SPECIFICATION FOR THE DESIGN, FABRICATION, AND ERECTION OF STRUCTURAL STEEL FOR BUILDINGS.
 - B. AISC CODE OF STANDARD PRACTICE.
 - C. AISC STANDARD WELDING SYMBOLS.
 - D. STRUCTURAL WELDING CODE AWS D11.30 OF THE AMERICAN WELDING SOCIETY. WELDING SHALL BE PERFORMED ONLY BY OPERATIONS QUALIFIED BY THE AISC STANDARD QUALIFICATION PROCEDURE, TO PERFORM THE PARTICULAR TYPE OF WORK REQUIRED.
- MATERIALS: (VERIFY WITH METAL BUILDING MANUFACTURER)
 - A. SHAPES AND PLATES: ASTM A992
 - B. STRUCTURAL PIPES: ASTM A53 GR B
 - C. STRUCTURAL TUBES: ASTM A500 GR B, PT. 46 (K8)
 - D. WELDING ELECTRODES: A5A B1 OR B6N REBARS B60 OR B10
 - E. BOLTS: ASTM A502 (ANCHOR BOLTS) TO BE ASTM A56 OR A507
 - F. PAINT AND PROTECTION:
 - 1. PRIME COAT: TOUCH UP AFTER ERECTION

PRE-ENGINEERED METAL BUILDING

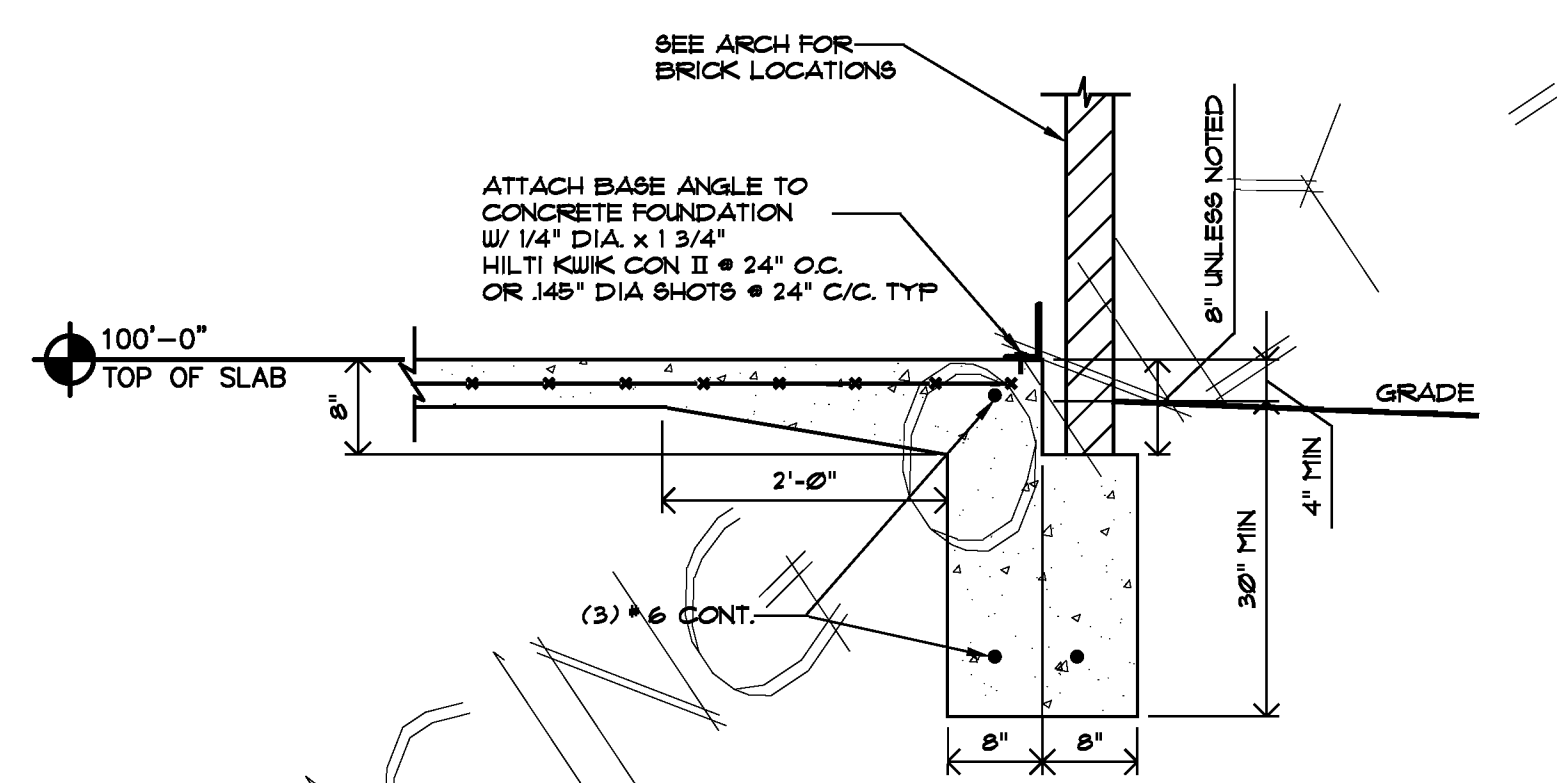
- THIS PROTOTYPE IS DESIGNED AROUND THE USE OF LIBERTY METAL BUILDING, INC. WITH WHICH HARTLY DOLLAR HAS A NATIONAL ACCOUNT. CONTACT LIBERTY BUILDINGS AS SHOWN ON COVER SHEET FOR INFORMATION.
- THE CONTRACTOR IS RESPONSIBLE FOR THE DESIGN, COORDINATION, FABRICATION, AND ERECTION OF THE PRE-ENGINEERED METAL BUILDING SUPERSTRUCTURE INCLUDING COLUMN BASE PLATES AND ANCHORAGE. THE CONTRACTOR SHALL SUBMIT SHOP DRAWINGS DETAILING ASPECTS OF THE METAL BUILDING CONSTRUCTION AND DESIGN CALCULATIONS FOR REVIEW PRIOR TO FABRICATION. SHOP DRAWINGS AND CALCULATIONS SHALL BEAR THE SEAL AND SIGNATURE OF A PROFESSIONAL ENGINEER REGISTERED IN THE STATE OF THE PROJECT.
- SHOP DRAWING REVIEW IS FOR CONFORMANCE TO DESIGN INTENT ONLY. THE ARCHITECT AND STRUCTURAL ENGINEER ASSUME NO RESPONSIBILITY FOR THE DESIGN OF THE METAL BUILDING SUPERSTRUCTURE AS A RESULT OF SHOP DRAWING REVIEW.
- GC TO COORDINATE THE INTEGRATION OF THE METAL BUILDING COMPONENTS WITH THE ARCHITECTURAL FOUNDATION REQUIREMENTS. DEVIATIONS TO BE COORDINATED BEFORE ERECTION COMMENCES.
- MECHANICAL DUCTS, PIPES AND EQUIPMENT ARE SUPPORTED BY THE ROOF GIRDERS AND PURLINS. THE ROOF GIRDERS, PURLINS, AND ANY AUXILIARY COMPONENTS SHALL BE DESIGNED TO SUPPORT SUCH LOADS. ALL INFORMATION (WEIGHTS AND LOCATIONS) PERTAINING TO MECHANICAL EQUIPMENT SUSPENDED FROM THE BUILDING ROOF SHALL BE SUBMITTED TO THE PRE-ENGINEERED METAL BUILDING ENGINEER FOR APPROVAL.
- DESIGN LOADS FOR PRE-ENGINEERED METAL BUILDING SHALL BE IN ACCORDANCE WITH LOCAL CODES AND DESIGN CONDITIONS. GC TO VERIFY LOADS WITH LOCAL BUILDING OFFICIALS AND GEOTECHNICAL REPORTS.
- THE CONCRETE FOUNDATION SHALL BE DESIGNED BASED ON THE VERTICAL AND LATERAL REACTIONS FURNISHED BY THE METAL BUILDING SUPPLIER. THE FOUNDATION DESIGN SHALL BE VERIFIED WITH REACTIONS SUPPLIED BY THE SELECTED BUILDING MANUFACTURER PRIOR TO ANY FOUNDATION CONSTRUCTION WORK BEGINNING.



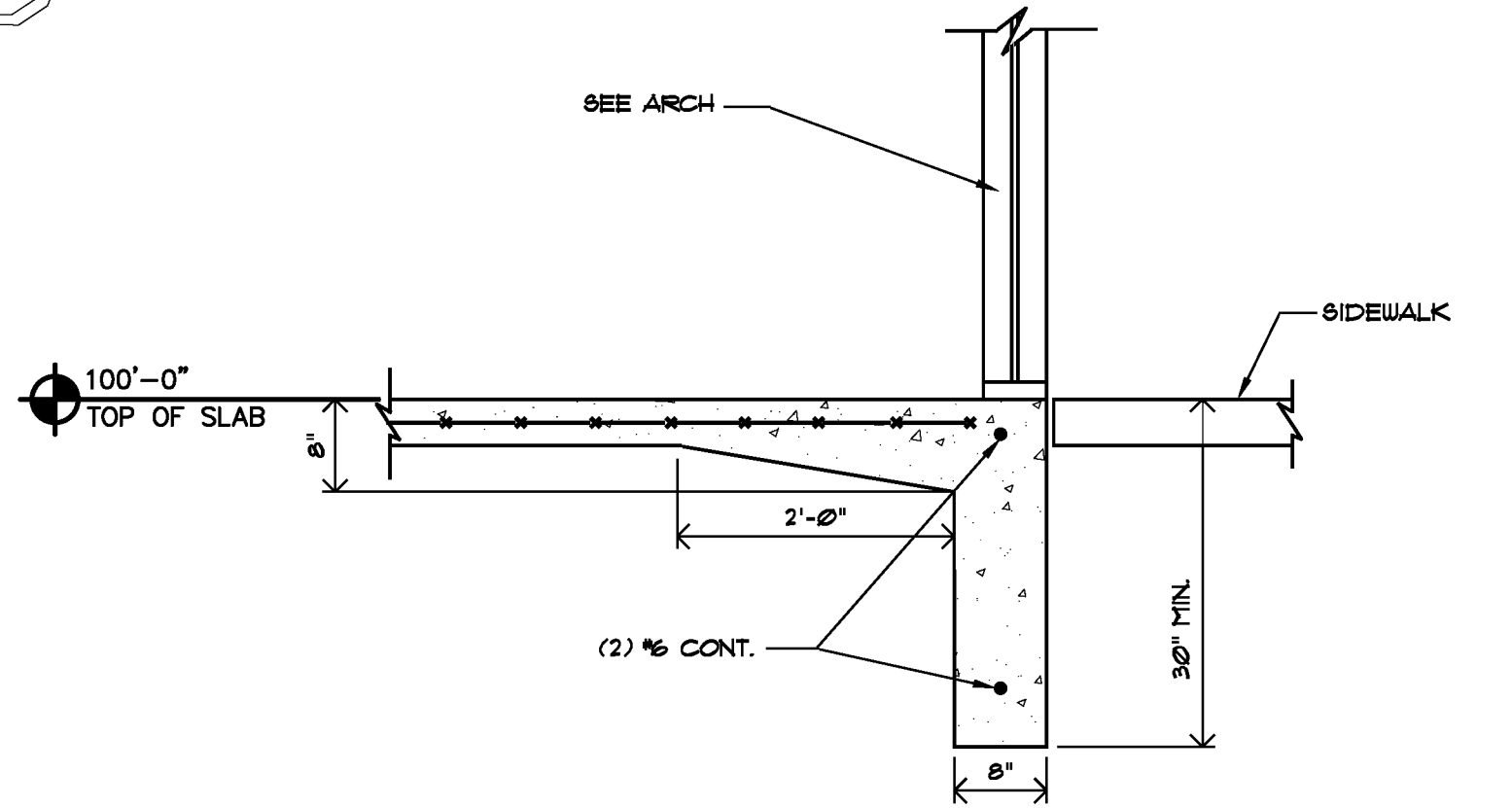
1 WALL SECTION @ COLUMN (A)
SCALE: 3/4" = 1'-0"



2 WALL SECTION @ COLUMN (B)
SCALE: 3/4" = 1'-0"



3 WALL SECTION
SCALE: 3/4" = 1'-0"



4 WALL SECTION
SCALE: 3/4" = 1'-0"

FOR PERMITTING

NOT FOR CONSTRUCTION

RECEIVED 12/14/11
BY PRIMAX CONSTRUCTION, INC.

Project #

DOLLAR GENERAL
FOR
PRIMAX PROPERTIES
YORK HIGHWAY (NC HIGHWAY 321)
GASTONIA, NC

Sheet Description #

FOUNDATION DETAILS

Architect's Project # 11235

BASED ON DOLLAR GENERAL SET PLAN 'C'
2010 PROTOTYPE CRITERIA

THIS DRAWING AND ITS COPIES ARE THE COPYRIGHT OF THE ARCHITECT. THEY MAY NOT BE USED FOR PROJECTS OTHER THAN THE DESIGNATED PROJECT WITHOUT THE SPECIFIC WRITTEN APPROVAL OF C. L. HELT ARCHITECT INC. AND OR CHESTER LEROY HELT, ARCHITECT

Drawn By :
S. MILLER

Checked By :
D. MYERS

Revisions :

1
2
3
4

Seal
Date :
12/8/11

Sheet No.
S2
of 2