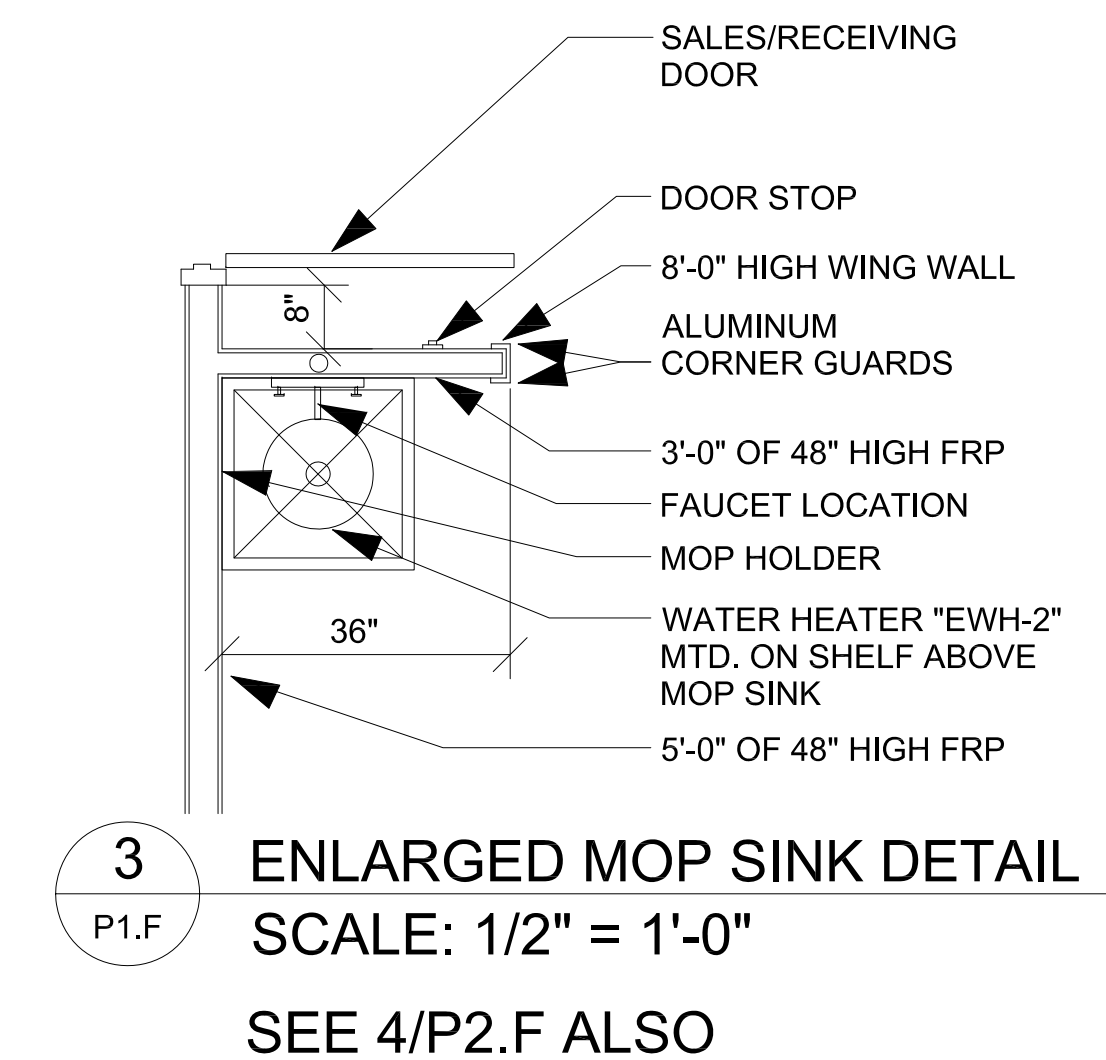


PLUMBING FIXTURE SCHEDULE

MARK	DESCRIPTION
WC-1	FLOOR MOUNTED ADA VITREOUS CHINA ELONGATED 1.6 FLUSH GALLON CLOSE COUPLED TWO PIECE SIPHON JET WATER CLOSET, FLUSH TANK WITH 12" ROUGH-IN. AMERICAN STANDARD CHAMPION 4 RIGHT HEIGHT #2002.014 OR EQUAL. PROVIDE SUPPLY & STOP. PROVIDE OPEN FRONT SEAT. AMERICAN STANDARD #5901.100 OR EQUAL (NOTE: TRIP SHALL BE ON WIDE SIDE OF WATER CLOSET). TANK TOP MUST BE BELOW GRAB BARS.
LAV-1	20"X18" WALL HUNG ADA LAVATORY W/ FRONT OVERFLOW, CONCEALED HANGERS & 4" CENTERS. AMERICAN STANDARD LUCERNE #0355.012 OR EQUAL. FAUCET SHALL BE POLISHED CHROME-PLATED CAST BRASS BODY WITH 4" SPOUT, 4" BRASS WRIST BLADE, 0.5 GPM SPRAY AND POP-UP DRAIN. AMERICAN STANDARD MONTERREY #5501.170 WITH #V05 AERATOR OR EQUAL. INSULATE EXPOSED DRAIN & WATER PIPES WITH TRUEBRO LAV GUARD KIT #102 E-Z.
MS-1	24" X 24" MOLDED STONE MOP SERVICE BASIN, WITH 3" DRAIN. FIAT #MSB-2424 OR EQUAL. PROVIDE SERVICE FAUCET WITH PAIL HOOK & INTEGRAL VACUUM BREAKER, MOP BRACKET, FLAT STAINLESS STEEL STRAINER AND HOSE & BRACKET. FIAT #830 AA, 889 CC, 1453 BB & 832 AA OR EQUAL.
EWH-1 & EWH-2	10 GALLON ELECTRIC WATER HEATER. 1.65KW @ 120V. A.O. SMITH #EJC-10 OR EQUAL. PROVIDE DRAIN PAN UNDER SHELF-MOUNTED WATER HEATER TERMINATE DRAIN LINE IN MOP SINK. PROVIDE FULL SIZE T&P RELIEF LINE, TERMINATE 2" ABOVE RIM LEVEL OF MOP SINK. INSTALL PER MANUFACTURER'S INSTRUCTIONS.
EDF-1	TWO-STATION, WALL MOUNTED, ELECTRIC DRINKING FOUNTAIN, BARRIER-FREE ACCESS (ADA), FRONT ONLY EASY TOUCH CONTROL, HIGH UNIT ON RIGHT. ELKAY #EZTLRDDC OR EQUAL. PROVIDE SUPPLY, STOP VALVE & TRAP. PROVIDE CANE APRON AS REQUIRED.
WH-1	FREEZE-PROOF WALL HYDRANT WITH BRONZE BODY & ANTI-SIPHON VACUUM BREAKER, BOX AND LOCKING COVER. PROVIDE WITH HOSE CONNECTION AND MOUNT AT 24" ABOVE GRADE. FLUSH MOUNTED TAMPER RESISTANT.
WCO-1	SIZE & INSTALL AS SHOWN ON PLANS. JOSAM, ZURN OR EQUAL.
FCO-1	SIZE & INSTALL AS SHOWN ON PLANS. JOSAM, ZURN OR EQUAL.
ECO-1	2-WAY EXTERIOR CLEAN-OUT. TYLER PIPE #003519 OR EQUAL. TRAFFIC RATED.

- NOTES:**
- PUBLIC SANITARY SEWER CONNECTION REQUIRED.
 - SEPTIC SYSTEM NOT ALLOWED UNLESS WRITTEN APPROVAL BY DOLLAR GENERAL STORE DESIGN.
 - HOLDING TANK SYSTEMS NOT ALLOWED.
 - LIFT STATIONS ARE NOT ALLOWED WITHOUT DOLLAR GENERAL APPROVAL
 - CONTRACTOR RESPONSIBLE FOR ALL PUBLIC UTILITY CONNECTIONS (GAS, WATER, ELECTRIC, SEPTIC) AS WELL AS INFRASTRUCTURE REQUIRED BY UTILITY COMPANY.
 - PROVIDE AND LOCATE BACKFLOW PREVENTER WITH TAMPER RESISTANT ACCESS CABINET PER LOCAL CODE.



PLUMBING PLANS **RECEIVED 1/18/11**
BY PRIMAX CONSTRUCTION, INC.

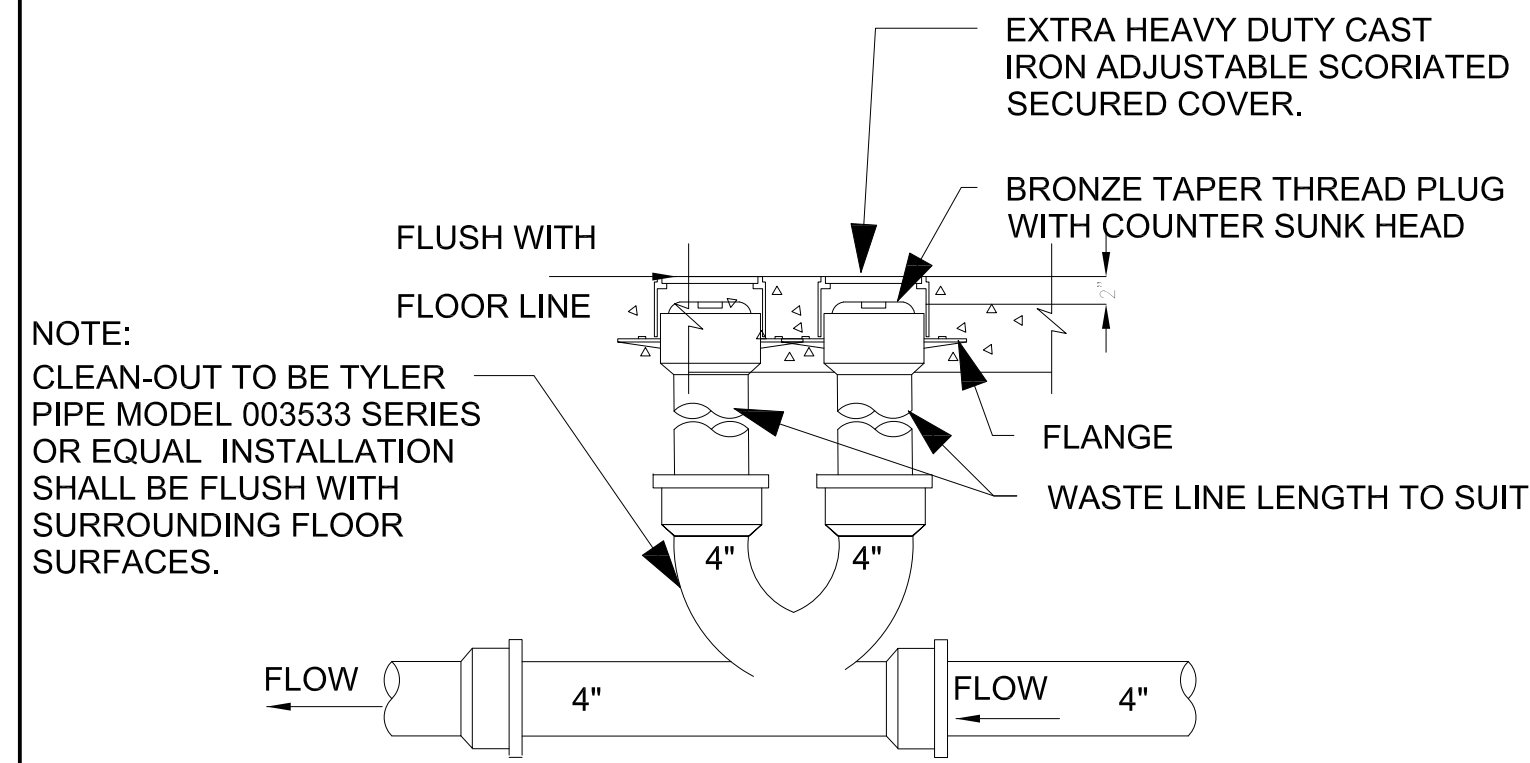
Peter E. Avetta Architecture
301 N. MAIN STREET, SUITE 1201
Winston-Salem, NC 27101
Tel. 336.306.4338
email: peavetta@aol.com



DOLLAR GENERAL
BROADVIEW BOULEVARD
NATRONA HEIGHTS
PENNSYLVANIA
HARRISON TOWNSHIP ALLEGHENY COUNTY
BASED ON DOLLAR GENERAL 8/18/2010 PROTOTYPE CRITERIA SET PLAN "F"

ISSUED FOR CONSTRUCTION	
REVISIONS:	DATE:
JOB NUMBER:	711-016
DRAWING APPD.	PEA
DATE:	10 / 05 / 2011
SHEET NUMBER:	

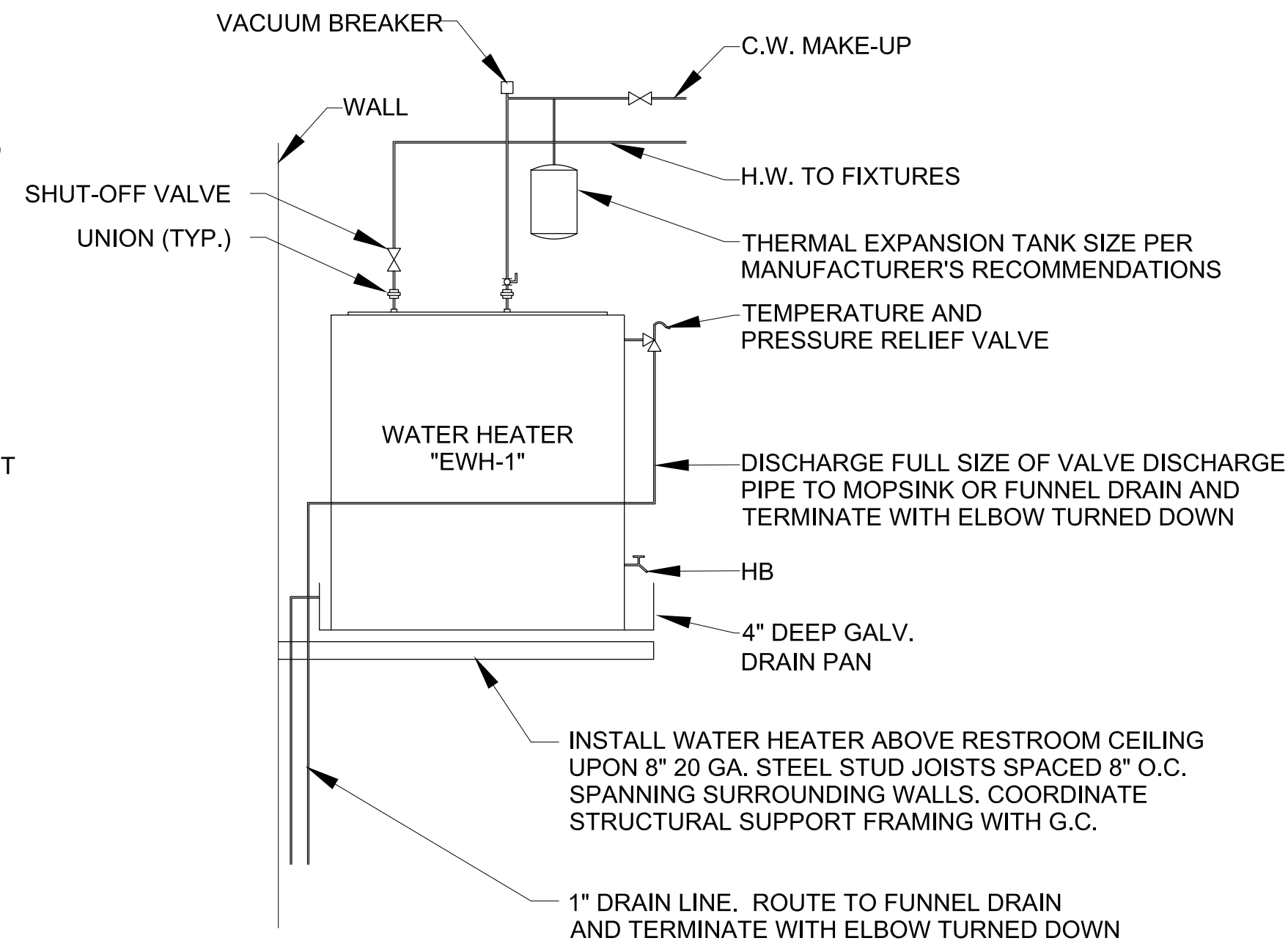
P1.F



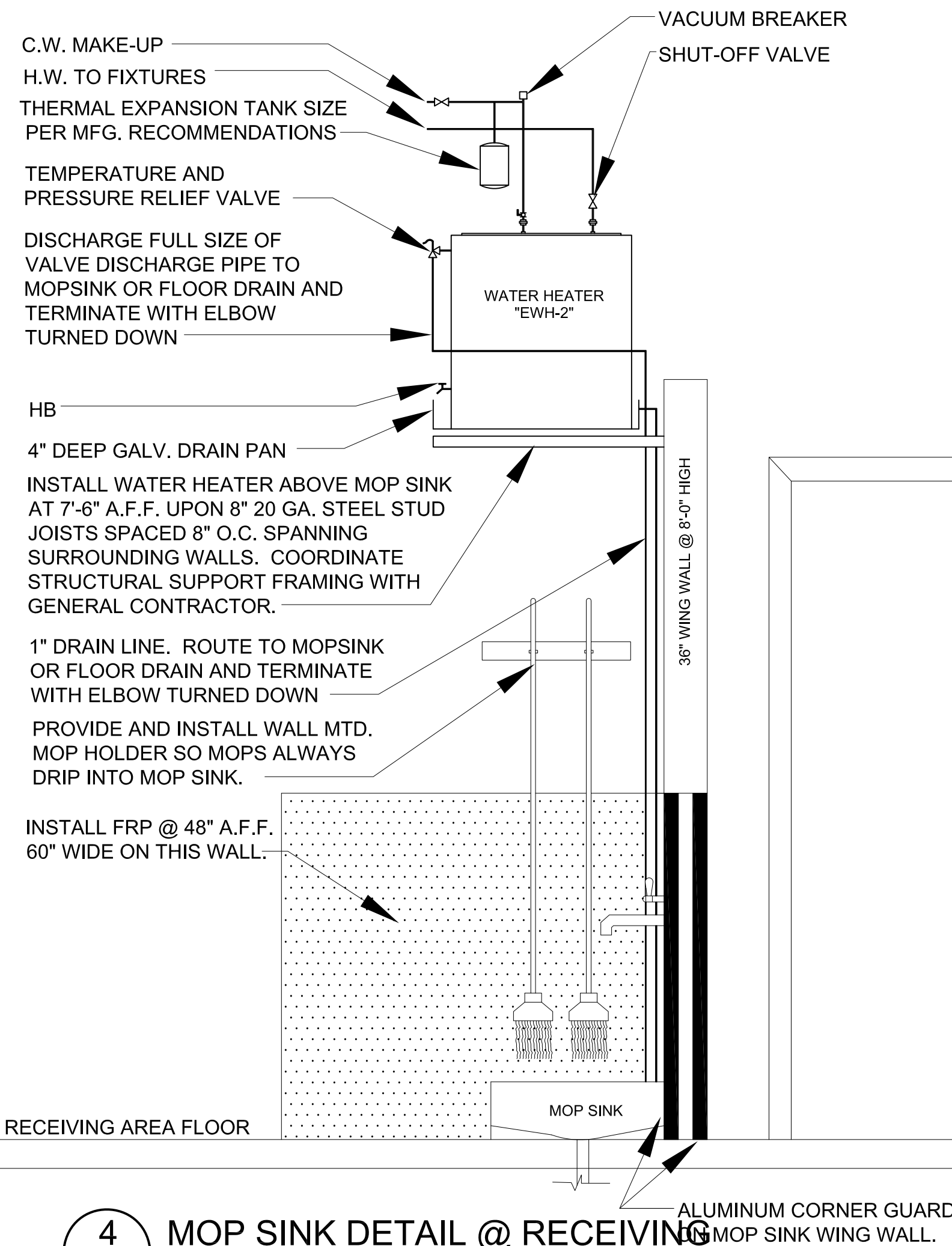
NOTE: CLEAN-OUT TO BE TYLER PIPE MODEL 003533 SERIES OR EQUAL. INSTALLATION SHALL BE FLUSH WITH SURROUNDING FLOOR SURFACES.

THIS DETAIL USED FOR 4" SANITARY LINE RUN BELOW FIXTURE RACKING. SEE PLANS.

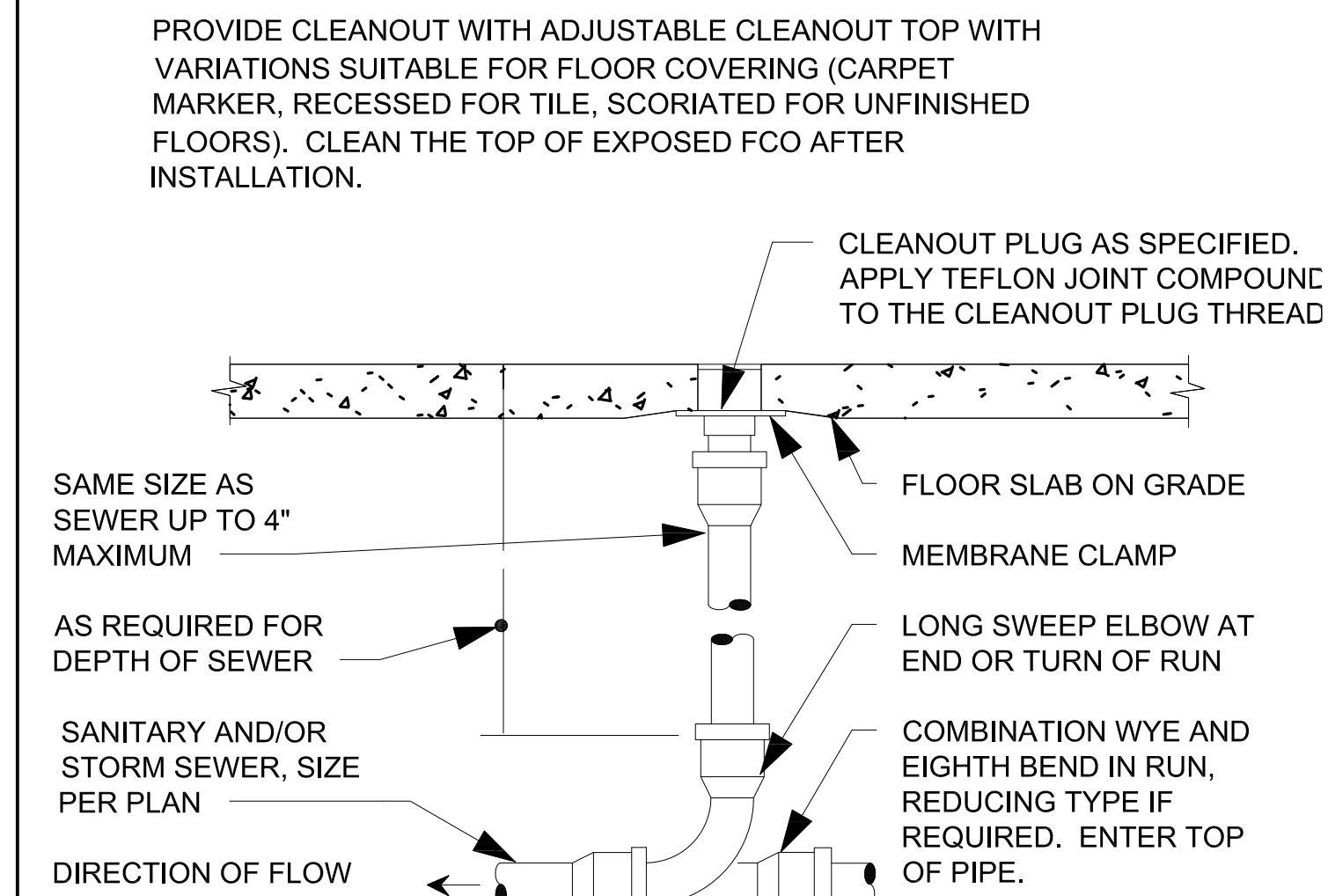
1 2-WAY YARD CLEAN OUT DETAIL
P2.F N.T.S.



2 WATER HEATER "EWH-1" DETAIL
P2.F N.T.S.



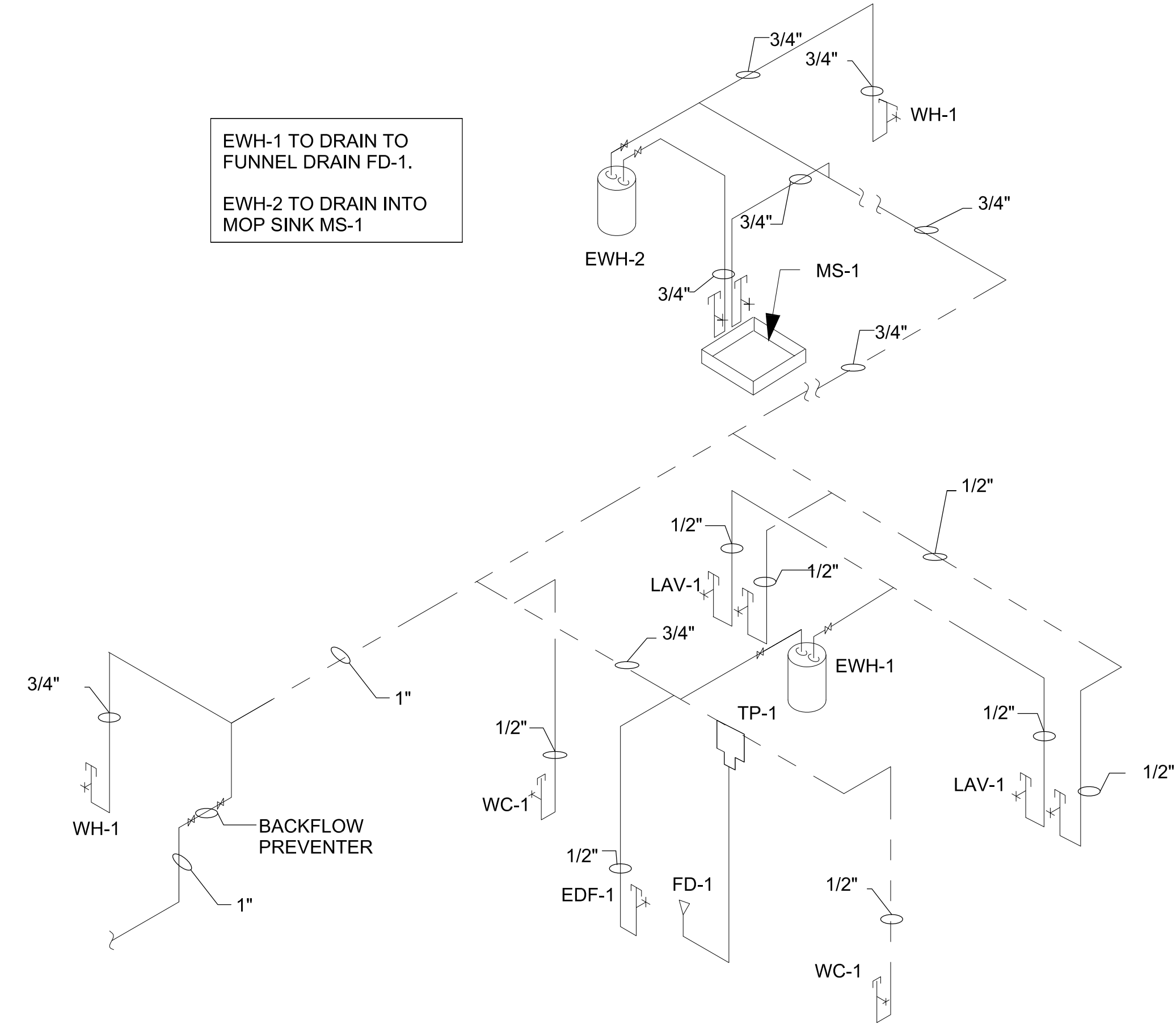
4 MOP SINK DETAIL @ RECEIVING
P2.F N.T.S.



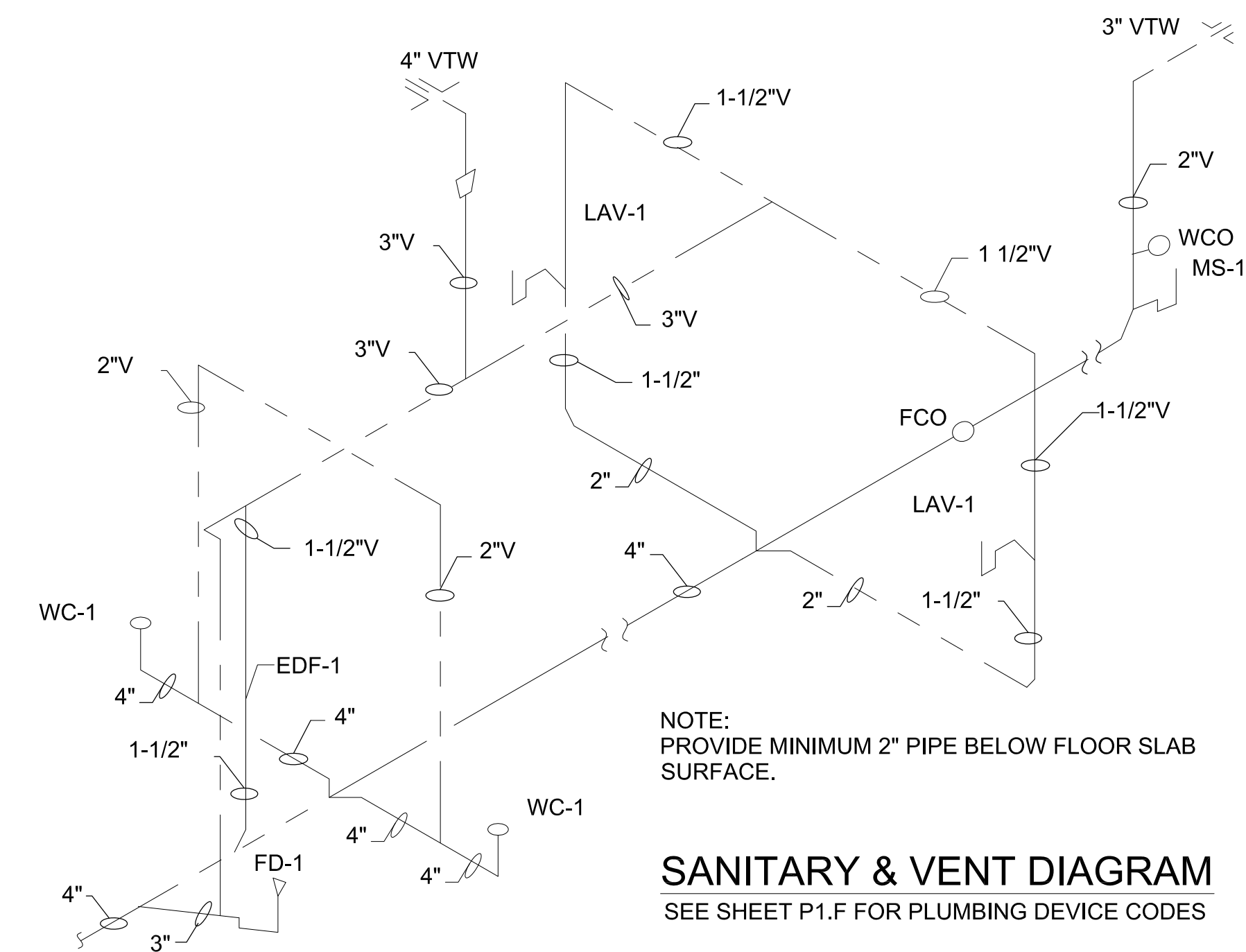
REFER TO SPECIFICATIONS AND SCHEDULE FOR MORE INFORMATION. LOCATE AT BUILDING EXIT, AT ENDS OF RUNS, AT TURNS OF PIPE GREATER THAN 45°, AT 50' INTERVALS ON STRAIGHT RUNS, AND/OR WHERE SHOWN ON PLANS AND RISERS. PROVIDE BACKFILL PER ARCHITECTURAL SPECIFICATIONS. LOCATE CLEANOUT WHERE THERE IS 18" CLEAR AROUND, FOR ACCESSIBILITY. CONSULT LOCAL CODES AND OFFICIALS FOR OTHER REQUIREMENTS.

3 FLOOR CLEAN OUT DETAIL
P2.F N.T.S.

EWH-1 TO DRAIN TO FUNNEL DRAIN FD-1.
EWH-2 TO DRAIN INTO MOP SINK MS-1



COLD & HOT WATER DIAGRAM
SEE SHEET P1.F FOR PLUMBING DEVICE CODES



SANITARY & VENT DIAGRAM
SEE SHEET P1.F FOR PLUMBING DEVICE CODES

RECEIVED 1/18/11
BY PRIMAX CONSTRUCTION, INC.

PLUMBING DETAILS & RISER DIAGRAMS

Peter E. Avetta
Architecture

301 N. MAIN STREET, SUITE 1201
Winston-Salem, NC 27101
Tel. 336.306.4338
email: peavetto@aol.com

SEAL:



DOLLAR GENERAL

BROADVIEW BOULEVARD
NATRONA HEIGHTS
PENNSYLVANIA
HARRISON TOWNSHIP ALLEGHENY COUNTY
BASED ON DOLLAR GENERAL 8/18/2010 PROTOTYPE
CRITERIA SET PLAN "F"

ISSUED FOR CONSTRUCTION

REVISIONS: DATE:

JOB NUMBER: 711-016

DRAWING APPD. PEA

DATE: 10 / 05 / 2011

SHEET NUMBER:

P2.F